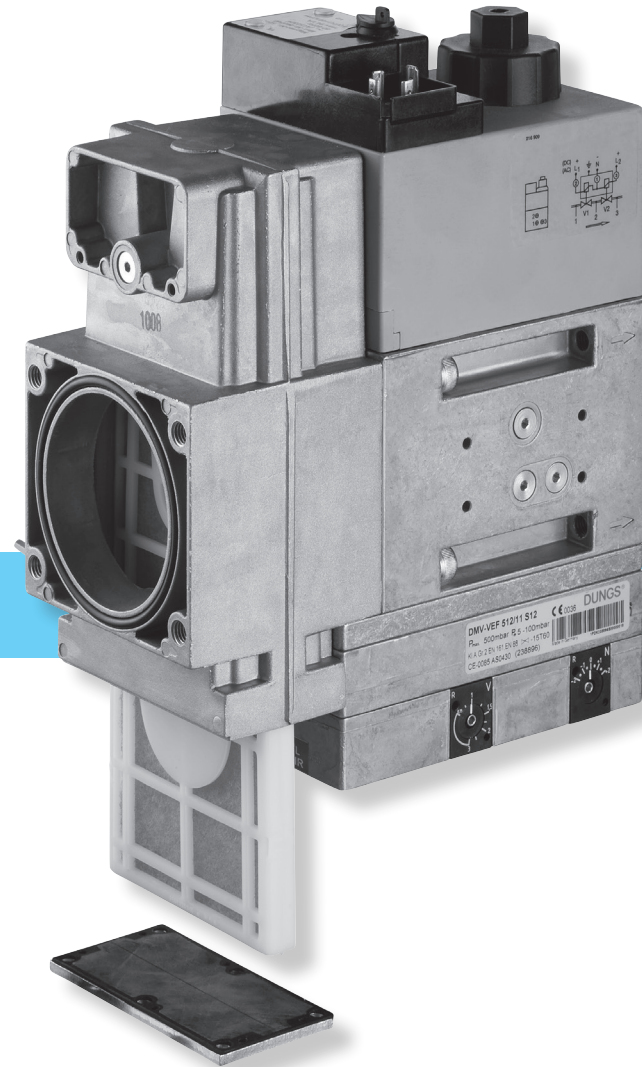


2026



Ersatzteilliste Replacement parts list

DUNGS®
Combustion Controls



Arbeiten an DUNGS-Sicherheits- und Regelgeräten dürfen nur von autorisiertem Fachpersonal ausgeführt werden.

Only a authorised and trained staff may carry out work on DUNGS safety and control devices.

Les interventions sur les organes de réglage et de sécurité DUNGS doivent être exclusivement réalisées par des spécialistes habilités.

Lavori agli apparecchi di regolazione e disicurezza DUNGS sono permessi soltanto a personale qualificato autorizzato.



Es gelten die jeweiligen landesspezifischen Zahlungs- und Lieferbedingungen.

Bitte informieren Sie sich bei der für Sie zuständigen Niederlassung oder Vertretung.

Unverbindliche Preisempfehlung, ohne gesetzliche gültige Mehrwertsteuer.

The delivery and payment conditions for each country shall apply accordingly.

Please enquire at the branch company or agency in your area.

Notbinding price recommendation excluding Statutory VAT.

Les conditions de livraison et de paiement applicables sont celles en vigueur dans le pays concerné.

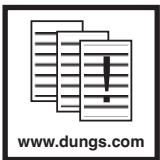
Renseignez-vous auprès de votre agence ou représentation DUNGS.

Prix recommandé hors TVA.

Valgono le rispettive condizioni di pagamento e di consegna nazionali. Per informazioni.

Per informazioni contattate la filiale o la rappresentanza per voi competente.

Prezzo indicativo, senza IVA.



Änderungen, die dem technischen Fortschritt dienen, vorbehalten.

Datenblätter und Betriebs- und Montageanleitungen finden Sie im Internet unter: www.dungs.com

We reserve the right to make alterations in the course of technical improvement.

You can find data sheets as well as operation and assembly instructions in the Internet at: www.dungs.com

Sous réserve de toute modification constituant un progrès technique.

Vous pouvez consulter les fiches techniques et instructions de montage et d'utilisation sur Internet à l'adresse suivante: www.dungs.com

Ci riserviamo qualsiasi modifica tecnica e costruttiva.

I fogli dati e le istruzioni di esercizio e di montaggio li trovate in Internet sotto:

www.dungs.com



Haftung für sicherheitsrelevante Anlagen, Geräte oder Bauteile

Bei sicherheitsrelevanten Bauteilen, Geräten und Anlagen entfällt jede Haftung von DUNGS, und zwar sowohl die Produkthaftung für Folgeschäden jeder Art, als auch die Haftung für Sachmängel, wenn Eingriffe, Veränderungen oder Reparaturen an diesen sicherheitsrelevanten Bauteilen, Geräten und Anlagen durch nicht autorisiertes Fachpersonal oder unter Verwendung von nicht für den Einsatz speziell zugelassenen Ersatzteilen vorgenommen werden.

Liability for safety-related systems, devices or components

For safety-related components, devices and systems, any liability of DUNGS, i.e. product liability for any kind of consequential damage as well as liability for defects, will cease to exist if alterations, modifications or repairs are made to these safety-related components, devices and systems by unauthorized specialist staff or with spare parts which have not been specially permitted for use in these safety-related components, devices and systems.

Responsabilité relative aux installations, appareils et composants de sécurité

En ce qui concerne les composants, appareils et installations de sécurité, DUNGS décline toute responsabilité, aussi bien en cas de dommages consécutifs de toutes sortes dus au produit qu'en cas de défauts du produit, si des interventions, modifications ou réparations ont été réalisées sur ces composants, appareils et installations de sécurité par un personnel spécialisé non habilité à cet effet ou si des pièces détachées ne disposant pas d'une homologation spécifique à l'usage qui en est fait ont été montées sur ces composants, appareils et installations de sécurité.

Responsabilità per impianti, apparecchi o componenti rilevanti in termini di sicurezza

Nell'ambito di componenti, apparecchi e impianti rilevanti in termini di sicurezza, decade qualsiasi responsabilità da parte di DUNGS, e con ciò s'intende sia la responsabilità di prodotto per danni conseguenti di qualsiasi natura, sia la responsabilità per vizi oggettivi, nel caso in cui su tali componenti, apparecchi ed impianti rilevanti in termini di sicurezza siano effettuati interventi, modifiche o riparazioni da parte di personale non autorizzato o senza l'impiego di parti di ricambio omologate per l'uso specifico.

Ersatzteilliste Replacement parts list 2026

Gültig: 1. Januar - 31. Dezember 2026

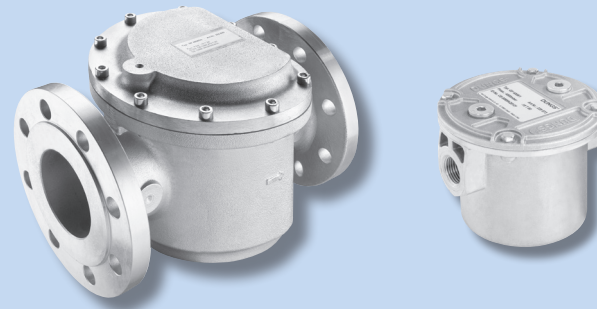
Valid: 1st January - 31st December 2026



Produktgruppe Product Group	Ersatzteile • Replacement parts Bezeichnung • Designation	Seite Page
Gasfilter	Filtereinsatz/Filter insert GF 5..., GF 25..., GF 40...	6
FR... Gasdruckregelgeräte Gas regulators	Sollwertfedern/Setpoint springs FRS..., FRNG...	9
	Sollwertfedern/Setpoint springs FRSBV 1010	14
	Gegenfeder FRNG/Counter spring FRNG	15
	Messwerk/Repair kit FRS 2...5...	16
	Messwerk/Repair kit FRNG 5...	17
	Messwerk/Repair kitFRN OH	18
	Feinfilter/Microfilter FRI/6 & FRI/10	19
FRM Mitteldruckregler Medium pressure regulator SAV Sicherheitsabsperrentil Safety Shut-off Valve	FRM 100xxx FRM 250xxx FRM-NOC 100xxx	21
	SAV 100xxx SAV 250xxx	
Einzelmagnetventile Single solenoid valves	IP 54/Ersatzmagnete/Replacement solenoids SV..., MV..., ZR..., LGV..., HSAV...	27
	IP 65/Ersatzmagnete/Replacement solenoids SV..., MV..., ZR..., LGV..., HSAV...	30
Hydraulikbremse Hydraulic brake	Hydraulikbremse	
	Hydraulic brake DMV..., MB..., MV..., ZR..., SV...	34
MB-B MultiBloc®	230 V AC/Ersatzmagnete/Replacement solenoids MB-...B...	37
	Leiterplatten/Replacement PCBs MB-B	39
	110 V AC/Ersatzmagnete/Replacement solenoids MB-...B...	41
	Filtereinsatz/Filter insert MB-...B...	43
MBC MultiBloc®	Ersatzmagnete/Replacement solenoids MBC	45
	Leiterplatten/Replacement PCBs MBC	47
	Filtereinsatz/Filter insert MBC	48
	Sollwertfedern/Setpoint springs MBC-SE (DN 65-100)	49
DMV-... Doppelmagnetventil Double solenoid valves	Ersatzmagnete/Replacement solenoids DMV-...	51
	Ersatzmagnete/Replacement solenoids DMV-.../11 eco, DMV-.../12	54
	Leiterplatten/Replacement PCBs DMV...	57
	Leiterplatten/Replacement PCBs DMV-.../11 eco, DMV-.../12	61
O-Ringe O-rings	Ersatz O-Ringe Replacement O-rings DMV-... + MB-... B0x	64
Ventilprüfsysteme Valve proving systems	Sicherung/Filter Fuse/Filter	66
Druckwächter Pressure switches	Druckwächter Ersatzteile Pressure switch spare parts	68

Kontakt / Contact		73
--------------------------	--	----

Gasfilter



Produktgruppe Product Group	Ersatzteile • Replacement parts Bezeichnung • Designation
Gasfilter	Filtereinsatz /Filter insert GF ..., GF .../1, GF.../50, GF.../10 Alle Filtereinsätze bestehend aus Filtermatte und O-Ring All filter inserts consisting of filter pad and O-ring

Filter insert GF 5..., GF 10..., GF 40..., GF 60...

Artikelbezeichnung Article designation	Bestell-Nr. Order no.	DN / Rp	Rp 3/8	Rp 1/2	Rp 3/4	Rp 1	Rp 1 1/4	Rp 1 1/2	Rp 2	Rp 2 1/2	DN 25	DN 40	DN 50	DN 65	DN 80	DN 100	DN 125	DN 150	DN 200
			GF 505/1, 1005/1, 4005/1, 6005/1	222687	Rp 1/2		X												
GF 507/1, 1007/1, 4007/1, 6007/1	Rp 3/4				X														
GF 510/1, 1010/1, 4010/1, 6010/1	222688	Rp 1				X													
GF 515/1, 1015/1, 4015/1, 6015/1		Rp 1 1/2							X										
GF 520/1, 1020/1, 4020/1, 6020/1	222689	Rp 2							X										
GF 1005 / 1007 / 5005 / 5007*	298174	Rp 1/2, Rp 3/4		X	X														
GF 1010 / GF 5010*	298175	Rp 1				X													
GF 1012 / 1015 / 5012 / 5015*	298176	Rp 1 1/4, Rp 1 1/2						X	X										
GF 1020 / 5020*	298177	Rp 2							X										
GF 60025/50, GF 60025/3, GF 40025/3	304914	DN 25									X								
GF 60040/50, GF 60040/3, GF 40040/3	304915	DN 40										X							
GF 60050/50, GF 60050/4, GF 40050/4	304917	DN 50											X						
GF 60065/50, GF 60065/4, GF 40065/4, GF 40065/3	304918	DN 65												X					
GF 60080/50, GF 60080/4, GF 40080/4, GF 40080/3	304919	DN 80													X				
GF 60100/50, GF 60100/4, GF 40100/4, GF 40100/3	304920	DN 100														X			
GF 60125/50, GF 60125/3, GF 40125	304921	DN 125															X		
GF 60150/50, GF 60150/3, GF 40150	304922	DN 150																X	
GF 60200/50, GF 60200/3, GF 40200	304923	DN 200																	X

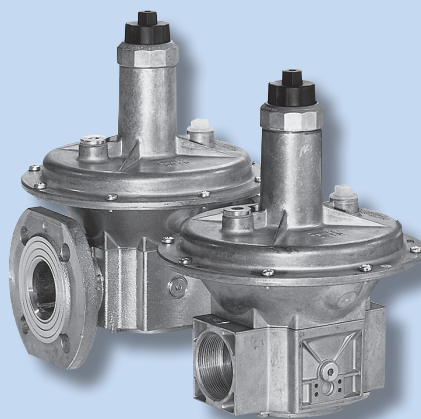
* Set bestehend aus 5 Filtermatten und O-Ringen/Set consisting of 5x filter pad and 5x o-ring

Filter insert GF 5..., GF 10..., GF 40..., GF 60...

Artikelbezeichnung Article designation	Bestell-Nr. Order no.	DN / Rp	Rp 3/8	Rp 1/2	Rp 3/4	Rp 1	Rp 1 1/4	Rp 1 1/2	Rp 2	Rp 2 1/2	DN 25	DN 40	DN 50	DN 65	DN 80	DN 100	DN 125	DN 150	DN 200	
GF 60025/10**	304870	DN 25									X									
GF 60040/10**	304871	DN 40										X								
GF 60050/10**	304873	DN 50											X							
GF 60065/10**	304874	DN 65											X							
GF 60080/10**	304875	DN 80												X						
GF 60100/10**	304876	DN 100													X					
GF 60125/10**	304877	DN 125														X				
GF 60150/10**	304878	DN 150															X			

**Filtereinsatz mit Filterfeinheit 10 µm / Filter insert with filter fineness 10 µm

FR...
Gasdruckregelgerät
Gas regulators



Produktgruppe Product Group	Ersatzteile • Replacement parts Bezeichnung • Designation
FR... Gasdruckregelgeräte Gas regulators	Sollwertfedern/Setpoint springs FRS..., FRNG...
	Sollwertfedern/Setpoint springs FRSBV 1010
	Gegenfeder FRNG/Counter spring FRNG
	Messwerk/Repair kit FRS 2...5...
	Messwerk/Repair kit FRNG 5...
	Feinfilter/Microfilter FRI/6 & FRI/10

Sollwertfedern_Setpoint springs FRS..., FRNG...

Artikelbezeichnung Article designation	Bestell-Nr. Order no.	Farbe Color	p _{max.} [mbar]	DN / Rp	Rp 3/8	Rp 1/2	Rp 3/4	Rp 1	Rp 1 1/4	Rp 1 1/2	Rp 2	Rp 2 1/2	DN 40	DN 50	DN 65	DN 80	DN 100	DN 125	DN 150	DN 200	
Feder 1-8 FRI, FRU, FRN, FRS, FRNG Spring 1-8 FRI, FRU, FRN, FRS, FRNG																					
Spring 1	229817	● brown	2,5 - 9 mbar	Rp 3/8	X																
Spring 1	229817	● brown	2,5 - 9 mbar	Rp 1/2		X															
Spring 1	229833	● brown	2,5 - 9 mbar	Rp 3/4			X														
Spring 1	229842	● brown	2,5 - 9 mbar	Rp 1				X													
Spring 1	229851	● brown	2,5 - 9 mbar	Rp 1 1/2						X											
Spring 1	229874	● brown	2,5 - 9 mbar	Rp 2							X										
Spring 1	229883	● brown	2,5 - 9 mbar	Rp 2 1/2								X									
Spring 1	229851	● brown	2,5 - 9 mbar	DN 40									X								
Spring 1	229874	● brown	2,5 - 9 mbar	DN 50										X							
Spring 1	229883	● brown	2,5 - 9 mbar	DN 65											X						
Spring 1	229883	● brown	2,5 - 9 mbar	DN 80												X					
Spring 1	229892	● brown	2,5 - 9 mbar	DN 100													X				
Spring 1	229901	● brown	2,5 - 9 mbar	DN 125														X			
Spring 1	229909	● brown	2,5 - 9 mbar	DN 150															X		
Spring 2	229818	○ white	5 - 13 mbar	Rp 3/8	X																
Spring 2	229818	○ white	5 - 13 mbar	Rp 1/2		X															
Spring 2	229834	○ white	5 - 13 mbar	Rp 3/4			X														
Spring 2	229843	○ white	5 - 13 mbar	Rp 1				X													
Spring 2	229852	○ white	5 - 13 mbar	Rp 1 1/2						X											
Spring 2	229875	○ white	5 - 13 mbar	Rp 2							X										
Spring 2	229884	○ white	5 - 13 mbar	Rp 2 1/2								X									
Spring 2	229852	○ white	5 - 13 mbar	DN 40									X								
Spring 2	229875	○ white	5 - 13 mbar	DN 50										X							
Spring 2	229884	○ white	5 - 13 mbar	DN 65											X						
Spring 2	229884	○ white	5 - 13 mbar	DN 80												X					
Spring 2	229893	○ white	5 - 13 mbar	DN 100													X				

Sollwertfedern_Setpoint springs FRS..., FRNG...

Artikelbezeichnung Article designation	Bestell-Nr. Order no.	Farbe Color	p _{max.} [mbar]	DN / Rp	Rp 3/8	Rp 1/2	Rp 3/4	Rp 1	Rp 1 1/4	Rp 1 1/2	Rp 2	Rp 2 1/2	DN 40	DN 50	DN 65	DN 80	DN 100	DN 125	DN 150	DN 200	
Spring 2	229902	○ white	5 - 13 mbar	DN 125															X		
Spring 2	229910	○ white	5 - 13 mbar	DN 150																X	
Spring 3	229820	● orange	5 - 20 mbar	Rp 3/8	X																
Spring 3	229820	● orange	5 - 20 mbar	Rp 1/2		X															
Spring 3	229835	● orange	5 - 20 mbar	Rp 3/4			X														
Spring 3	229844	● orange	5 - 20 mbar	Rp 1				X													
Spring 3	229853	● orange	5 - 20 mbar	Rp 1 1/2						X											
Spring 3	229876	● orange	5 - 20 mbar	Rp 2							X										
Spring 3	229885	● orange	5 - 20 mbar	Rp 2 1/2								X									
Spring 3	229853	● orange	5 - 20 mbar	DN 40									X								
Spring 3	229876	● orange	5 - 20 mbar	DN 50										X							
Spring 3	229885	● orange	5 - 20 mbar	DN 65											X						
Spring 3	229885	● orange	5 - 20 mbar	DN 80												X					
Spring 3	229894	● orange	5 - 20 mbar	DN 100													X				
Spring 3	229903	● orange	5 - 20 mbar	DN 125															X		
Spring 3	229911	● orange	5 - 20 mbar	DN 150																X	
Spring 4	229821	● blue	10 - 30 mbar	Rp 3/8	X																
Spring 4	229821	● blue	10 - 30 mbar	Rp 1/2		X															
Spring 4	229836	● blue	10 - 30 mbar	Rp 3/4			X														
Spring 4	229845	● blue	10 - 30 mbar	Rp 1				X													
Spring 4	229854	● blue	10 - 30 mbar	Rp 1 1/2						X											
Spring 4	229877	● blue	10 - 30 mbar	Rp 2							X										
Spring 4	229886	● blue	10 - 30 mbar	Rp 2 1/2								X									
Spring 4	229854	● blue	10 - 30 mbar	DN 40									X								
Spring 4	229877	● blue	10 - 30 mbar	DN 50										X							
Spring 4	229886	● blue	10 - 30 mbar	DN 65											X						
Spring 4	229886	● blue	10 - 30 mbar	DN 80												X					
Spring 4	229895	● blue	10 - 30 mbar	DN 100													X				

Sollwertfedern_Setpoint springs FRS..., FRNG...

Artikelbezeichnung Article designation	Bestell-Nr. Order no.	Farbe Color	p _{max.} [mbar]	DN / Rp	Rp 3/8	Rp 1/2	Rp 3/4	Rp 1	Rp 1 1/4	Rp 1 1/2	Rp 2	Rp 2 1/2	DN 40	DN 50	DN 65	DN 80	DN 100	DN 125	DN 150	DN 200	
Spring 4	229904	● blue	10 - 30 mbar	DN 125															X		
Spring 4	229912	● blue	10 - 30 mbar	DN 150																X	
Spring 5	229822	● red	25 - 55 mbar	Rp 3/8	X																
Spring 5	229822	● red	25 - 55 mbar	Rp 1/2		X															
Spring 5	229837	● red	25 - 55 mbar	Rp 3/4			X														
Spring 5	229846	● red	25 - 55 mbar	Rp 1				X													
Spring 5	229869	● red	25 - 55 mbar	Rp 1 1/2						X											
Spring 5	229878	● red	25 - 55 mbar	Rp 2							X										
Spring 5	229887	● red	25 - 55 mbar	Rp 2 1/2								X									
Spring 5	229869	● red	25 - 55 mbar	DN 40									X								
Spring 5	229878	● red	25 - 55 mbar	DN 50										X							
Spring 5	229887	● red	25 - 55 mbar	DN 65											X						
Spring 5	229887	● red	25 - 55 mbar	DN 80												X					
Spring 5	229896	● red	25 - 55 mbar	DN 100													X				
Spring 5	229905	● red	25 - 55 mbar	DN 125															X		
Spring 5	229913	● red	25 - 55 mbar	DN 150																X	
Spring 6	229823	● yellow	30 - 70 mbar	Rp 3/8	X																
Spring 6	229823	● yellow	30 - 70 mbar	Rp 1/2		X															
Spring 6	229838	● yellow	30 - 70 mbar	Rp 3/4			X														
Spring 6	229847	● yellow	30 - 70 mbar	Rp 1				X													
Spring 6	229870	● yellow	30 - 70 mbar	Rp 1 1/2						X											
Spring 6	229879	● yellow	30 - 70 mbar	Rp 2							X										
Spring 6	229888	● yellow	30 - 70 mbar	Rp 2 1/2								X									
Spring 6	229870	● yellow	30 - 70 mbar	DN 40									X								
Spring 6	229879	● yellow	30 - 70 mbar	DN 50										X							
Spring 6	229888	● yellow	30 - 70 mbar	DN 65											X						
Spring 6	229888	● yellow	30 - 70 mbar	DN 80												X					
Spring 6	229897	● yellow	30 - 70 mbar	DN 100													X				

Sollwertfedern_Setpoint springs FRS..., FRNG...

Artikelbezeichnung Article designation	Bestell-Nr. Order no.	Farbe Color	p _{max.} [mbar]	DN / Rp	Rp 3/8	Rp 1/2	Rp 3/4	Rp 1	Rp 1 1/4	Rp 1 1/2	Rp 2	Rp 2 1/2	DN 40	DN 50	DN 65	DN 80	DN 100	DN 125	DN 150	DN 200	
Spring 6	229906	● yellow	30 - 70 mbar	DN 125															X		
Spring 6	229914	● yellow	30 - 70 mbar	DN 150																X	
Spring 7	229824	● black	60 - 110 mbar	Rp 3/8	X																
Spring 7	229824	● black	60 - 110 mbar	Rp 1/2		X															
Spring 7	229839	● black	60 - 110 mbar	Rp 3/4			X														
Spring 7	229848	● black	60 - 110 mbar	Rp 1				X													
Spring 7	229871	● black	60 - 110 mbar	Rp 1 1/2						X											
Spring 7	229880	● black	60 - 110 mbar	Rp 2							X										
Spring 7	229889	● black	60 - 110 mbar	Rp 2 1/2								X									
Spring 7	229871	● black	60 - 110 mbar	DN 40									X								
Spring 7	229880	● black	60 - 110 mbar	DN 50										X							
Spring 7	229889	● black	60 - 110 mbar	DN 65											X						
Spring 7	229889	● black	60 - 110 mbar	DN 80												X					
Spring 7	229898	● black	60 - 110 mbar	DN 100													X				
Spring 7	229907	● black	60 - 110 mbar	DN 125															X		
Spring 7	229915	● black	60 - 110 mbar	DN 150																X	
Spring 8	229825	● pink	100 - 150 mbar	Rp 3/8	X																
Spring 8	229825	● pink	100 - 150 mbar	Rp 1/2		X															
Spring 8	229840	● pink	100 - 150 mbar	Rp 3/4			X														
Spring 8	229849	● pink	100 - 150 mbar	Rp 1				X													
Spring 8	229872	● pink	100 - 150 mbar	Rp 1 1/2						X											
Spring 8	229881	● pink	100 - 150 mbar	Rp 2							X										
Spring 8	229890	● pink	100 - 150 mbar	Rp 2 1/2								X									
Spring 8	229872	● pink	100 - 150 mbar	DN 40									X								
Spring 8	229881	● pink	100 - 150 mbar	DN 50										X							
Spring 8	229890	● pink	100 - 150 mbar	DN 65											X						
Spring 8	229890	● pink	100 - 150 mbar	DN 80												X					
Spring 8	229899	● pink	100 - 150 mbar	DN 100													X				

Sollwertfedern_Setpoint springs FRS..., FRNG...

Artikelbezeichnung Article designation	Bestell-Nr. Order no.	Farbe Color	p _{max.} [mbar]	DN / Rp	Rp 3/8	Rp 1/2	Rp 3/4	Rp 1	Rp 1 1/4	Rp 1 1/2	Rp 2	Rp 2 1/2	DN 40	DN 50	DN 65	DN 80	DN 100	DN 125	DN 150	DN 200	
Spring 8	229908	● pink	100 - 150 mbar	DN 125														X			
Spring 8	229916	● pink	100 - 150 mbar	DN 150															X		
Spring 8		● pink	100 - 150 mbar	DN 200																	
Feder 9 nur FRS..., FRNG... Spring 9 only for FRS..., FRNG...																					
Spring 9	229826	● grey	140 - 200 mbar	Rp 3/8	X																
Spring 9	229826	● grey	140 - 200 mbar	Rp 1/2		X															
Spring 9	229841	● grey	140 - 200 mbar	Rp 3/4			X														
Spring 9	229850	● grey	140 - 200 mbar	Rp 1				X													
Spring 9	229873	● grey	140 - 200 mbar	Rp 1 1/2						X											
Spring 9	229882	● grey	140 - 200 mbar	Rp 2							X										
Spring 9	229891	● grey	140 - 200 mbar	Rp 2 1/2								X									
Spring 9	229873	● grey	140 - 200 mbar	DN 40									X								
Spring 9	229882	● grey	140 - 200 mbar	DN 50										X							
Spring 9	229891	● grey	140 - 200 mbar	DN 65											X						
Spring 9	229891	● grey	140 - 200 mbar	DN 80												X					
Spring 9	229900	● grey	140 - 200 mbar	DN 100													X				
Spring 9	243416	● grey	140 - 200 mbar	DN 125														X			
Spring 9	243417	● grey	140 - 200 mbar	DN 150															X		
Spring 9A	260532	● grey	140 - 240 mbar	DN 100													X				

Sollwertfedern_Setpoint springs FRSBV 1010

Artikelbezeichnung Article designation	Bestell-Nr. Order no.	Farbe Color	p _{max.} [mbar]	Rp 3/8	Rp 1/2	Rp 3/4	Rp 1	Rp 1 1/4	Rp 1 1/2	Rp 2	Rp 2 1/2	DN 40	DN 50	DN 65	DN 80	DN 100	DN 125	DN 150	DN 200
Spring	226382	● yellow	70 - 350 mbar				X												
Spring	226383	● grey	300 - 830 mbar				X												

Gegenfeder FRNG_Counter spring FRNG

Artikelbezeichnung Article designation	Bestell-Nr. Order no.	Anzahl (Stk.) Amount (pcs.)	DN / Rp	Rp 3/8	Rp 1/2	Rp 3/4	Rp 1	Rp 1 1/4	Rp 1 1/2	Rp 2	Rp 2 1/2	DN 40	DN 50	DN 65	DN 80	DN 100	DN 125	DN 150	DN 200
Counter spring FRNG	242703	5	Rp 1/2		X														
Counter spring FRNG	242704	5	Rp 3/4			X													
Counter spring FRNG	242705	5	Rp 1				X												
Counter spring FRNG	242706	5	Rp 1 1/2						X										
Counter spring FRNG	242707	5	Rp 2							X									
Counter spring FRNG	242708	5	DN 65											X					
Counter spring FRNG	242709	5	DN 80												X				
Counter spring FRNG	242710	5	DN 100													X			
Counter spring FRNG	242711	5	DN 125														X		
Counter spring FRNG	242712	5	DN 150															X	

Messwerk_Repair kit FRS 2...5...

Artikelbezeichnung Article designation	Bestell-Nr. Order no.	DN / Rp	Rp 3/8	Rp 1/2	Rp 3/4	Rp 1	Rp 1 1/4	Rp 1 1/2	Rp 2	Rp 2 1/2	DN 40	DN 50	DN 65	DN 80	DN 100	DN 125	DN 150	DN 200
FRS Repair kit	068890	Rp 3/8	X															
FRS Repair kit	068890	Rp 2 1/2		X														
FRS Repair kit	068908	Rp 3/4			X													
FRS Repair kit	068916	Rp 1				X												
FRS Repair kit	068924	Rp 1 1/2						X										
FRS Repair kit	068932	Rp 2							X									
FRS Repair kit	068940	Rp 2 1/2								X								
FRS Repair kit	068924	DN 40									X							
FRS Repair kit	068932	DN 50										X						
FRS Repair kit	068940	DN 65											X					
FRS Repair kit	091868	DN 80												X				
FRS Repair kit	091876	DN 100													X			
FRS Repair kit	069005	DN 125														X		
FRS Repair kit	069013	DN 150															X	

Messwerk_Repair kit FRNG 5...

Artikelbezeichnung Article designation	Bestell-Nr. Order no.	DN / Rp	Rp 3/8	Rp 1/2	Rp 3/4	Rp 1	Rp 1 1/4	Rp 1 1/2	Rp 2	Rp 2 1/2	DN 40	DN 50	DN 65	DN 80	DN 100	DN 125	DN 150	DN 200
FRNG Repair kit	229688	Rp 1/2		X														
FRNG Repair kit	229689	Rp 3/4			X													
FRNG Repair kit	229690	Rp 1				X												
FRNG Repair kit	229657	Rp 1 1/2						X										
FRNG Repair kit	229658	Rp 2							X									
FRNG Repair kit	229657	DN 40									X							
FRNG Repair kit	229658	DN 50										X						
FRNG Repair kit	229659	DN 65											X					
FRNG Repair kit	229660	DN 80												X				
FRNG Repair kit	229661	DN 100													X			
FRNG Repair kit	229662	DN 125														X		
FRNG Repair kit	229663	DN 150															X	

Messwerk_Repair kit FRN OH

Artikelbezeichnung Article designation	Bestell-Nr. Order no.	DN / Rp	Rp 3/8	Rp 1/2	Rp 3/4	Rp 1	Rp 1 1/4	Rp 1 1/2	Rp 2	Rp 2 1/2	DN 40	DN 50	DN 65	DN 80	DN 100	DN 125	DN 150	DN 200
FRN OH Repair kit	303087	DN 40									X							
FRN OH Repair kit	303088	DN 50										X						
FRN OH Repair kit	303090	DN 65											X					
FRN OH Repair kit	303091	DN 80												X				
FRN OH Repair kit	303092	DN 100													X			
FRN OH Repair kit	303093	DN 125														X		
FRN OH Repair kit	303094	DN 150															X	

Feinfilter_Microfilter FRI/6 & FRI/10

Artikelbezeichnung Article designation	Bestell-Nr. Order no.	Anzahl (Stk.) Amount (pcs.)	DN / Rp	Rp 3/8	Rp 1/2	Rp 3/4	Rp 1	Rp 1 1/4	Rp 1 1/2	Rp 2	Rp 2 1/2	DN 40	DN 50	DN 65	DN 80	DN 100	DN 125	DN 150	DN 200
FRI Microfilter	230439	1	Rp 3/8	X															
FRI Microfilter	230440	1	Rp 1/2		X														
FRI Microfilter	230440	1	Rp 3/4			X													
FRI Microfilter	230441	1	Rp 1				X												
FRI Microfilter	230441	1	Rp 1 1/4					X											

FRM
Mitteldruckregler
Medium pressure regulator

SAV
Sicherheitsabsperrentil
Safety Shut-off Valve



Produktgruppe Product Group	Ersatzteile • Replacement parts Bezeichnung • Designation
FRM Mitteldruckregler Medium pressure regulator SAV Sicherheitsabsperrentil Safety Shut-off Valve	FRM 100xxx FRM 250xxx FRM-NOC 100xxx SAV 100xxx SAV 250xxx

FRM 100xxx / FRM 250xxx

Artikelbezeichnung Article designation	Bestell-Nr. Order no.	DN 25	DN 40	DN 50	DN 65	DN 80	ND	MD	HD	UHD
Kit 1 Protective cap	270396	X	X	X	X	X	X	X	X	X
Kit 2 Working diaphragm with O-ring	270384	X	X	X			X			
Kit 2 Working diaphragm with O-ring	270385	X	X	X				X		
Kit 2 Working diaphragm with O-ring	270386	X	X	X					X	X
Kit 2 Working diaphragm with O-ring	277997				X	X		X		
Kit 2 Working diaphragm with O-ring	277998				X	X			X	X
Kit 3 Control plate with sleeve and O-rings	270387	X					X	X	X	X
Kit 3 Control plate with sleeve and O-rings	270388		X				X	X	X	X
Kit 3 Control plate with sleeve and O-rings	270389			X			X			
Kit 3 Control plate with sleeve and O-rings	271092			X				X	X	X
Kit 3 Control plate with shaft	277999				X		X	X	X	X
Kit 3 Control plate with shaft	278000					X	X	X	X	X
Kit 4 Valve seat with sealing ring and O-ring**	270390	X					X	X	X	X
Kit 4 Valve seat with sealing ring and O-ring**	270391		X				X	X	X	X
Kit 4 Valve seat with sealing ring and O-ring**	270392			X			X	X	X	X
Kit 4 Valve seat with sealing ring and O-ring*	303318	X					X	X	X	X
Kit 4 Valve seat with sealing ring and O-ring*	303319		X				X	X	X	X
Kit 4 Valve seat with sealing ring and O-ring*	303320			X			X	X	X	X
Kit 4 Compensating membrane	278001				X		X	X	X	X
Kit 4 Compensating membrane	278002					X	X	X	X	X
Kit 5 O-rings**	270393	X					X	X	X	X
Kit 5 O-rings**	270394		X				X	X	X	X
Kit 5 O-rings**	270395			X			X	X	X	X
Kit 5 O-rings	278004				X	X	X	X	X	X

* gültig ab/valid from 2024-08 and SN ≥ 10000

** gültig bis/valid until 2024-08 and SN < 10000

FRM 100xxx / FRM 250xxx

Artikelbezeichnung Article designation	Bestell-Nr. Order no.	DN 25	DN 40	DN 50	DN 65	DN 80	ND	MD	HD	UHD
Kit FRM complete**	271093	x					x			
Kit FRM complete**	271094	x						x		
Kit FRM complete**	271095	x							x	x
Kit FRM complete**	271096		x				x			
Kit FRM complete**	271097		x					x		
Kit FRM complete**	271098		x						x	x
Kit FRM complete**	271099			x			x			
Kit FRM complete**	271100			x				x		
Kit FRM complete**	271101			x					x	x
Kit FRM complete*	303430	x					x			
Kit FRM complete*	303431	x						x		
Kit FRM complete*	303432	x							x	x
Kit FRM complete*	303433		x				x			
Kit FRM complete*	303434		x					x		
Kit FRM complete*	303435		x						x	x
Kit FRM complete*	303436			x			x			
Kit FRM complete*	303437			x				x		
Kit FRM complete*	303438			x					x	x

* gültig ab/valid from 2024-08 and SN ≥ 10000

** gültig bis/valid until 2024-08 and SN < 10000

FRM-NOC 100xxx

Artikelbezeichnung Article designation	Bestell-Nr. Order no.	Rp 1	Rp 1 ½	Rp 2	DN 25	DN 40	DN 50	ND	MD	HD	UHD
kit1 Top cover Aluminium cap	287754	X	X		X			X	X		
kit1 Top cover Aluminium cap	287754	X	X	X	X	X	X			X	
KIT 2 Top cover UHD	270396	X	X	X	X	X	X				X
Kit 3 Valve seat orifices**	287755	X	X					X	X	X	X
Kit 4 Valve seat orifices**	287756				X			X	X	X	X
Kit 5 Valve seat orifices**	287757			X		X		X	X	X	X
Kit 6 Valve seat orifices**	287758						X	X	X	X	X
Kit 3 Valve seat orifices*	303401	X	X					X	X	X	X
Kit 4 Valve seat orifices*	303402				X			X	X	X	X
Kit 5 Valve seat orifices*	303403			X		X		X	X	X	X
Kit 6 Valve seat orifices*	303404						X	X	X	X	X
KIT 7 Control plate with O-ring	287759	X	X					X	X		
KIT 7 Control plate with O-ring	287760	X	X							X	X
KIT 7 Control plate with O-ring	287761			X		X		X	X		
KIT 7 Control plate with O-ring	287762			X		X				X	
KIT 7 Control plate with O-ring	287763			X		X					X
KIT 7 Control plate with O-ring	287764				X			X	X		
KIT 7 Control plate with O-ring	287765				X					X	X
KIT 7 Control plate with O-ring	287766						X	X	X		
KIT 7 Control plate with O-ring	287767						X			X	
KIT 7 Control plate with O-ring	287768						X				X
Kit 17 Working diaphragm with O-ring	287769	X	X		X			X			
Kit 18 Working diaphragm with O-ring	287770	X	X		X				X		
Kit 19 Working diaphragm with O-ring	287771	X	X		X					X	
Kit 20 Working diaphragm with O-ring	287772	X	X		X						X
Kit 21 Working diaphragm with O-ring	287773			X		X	X	X			
Kit 22 Working diaphragm with O-ring	287774			X		X	X		X		

* gültig ab/valid from 2024-08 and SN ≥ 10000

** gültig bis/valid until 2024-08 and SN < 10000

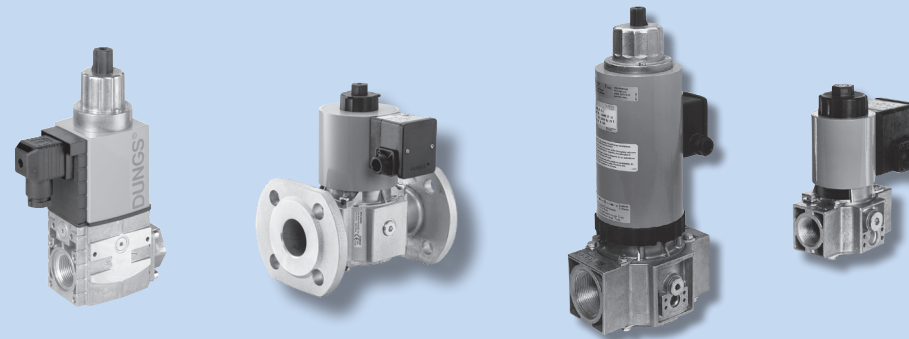
FRM-NOC 100xxx

Artikelbezeichnung Article designation	Bestell-Nr. Order no.	Rp 1	Rp 1 ½	Rp 2	DN 25	DN 40	DN 50	ND	MD	HD	UHD
Kit 23 Working diaphragm with O-ring	287775			X		X	X			X	
Kit 24 Working diaphragm with O-ring	287776			X		X	X				X
KIT 25 Protective Cap ASE	278005	X	X	X	X	X	X	X	X	X	X
KIT 26 ASE with O-ring	303391	X	X		X			X	X		
KIT 26 ASE with O-ring	303392	X	X		X					X	X
KIT 26 ASE with O-ring	303393			X		X		X	X		
KIT 26 ASE with O-ring	303398			X		X				X	X
KIT 26 ASE with O-ring	303395						X	X	X		
KIT 26 ASE with O-ring	303396						X			X	X

SAV 100xxx / SAV 250xxx

Artikelbezeichnung Article designation	Bestell-Nr. Order no.	DN 25	DN 40	DN 50	DN 65	DN 80	ND	MD	HD	UHD
Protective cap	278005				X	X	X	X	X	X
Closing shell SAV	278003				X	X	X	X	X	X
ASE with O-ring	303391	X					X	X		
ASE with O-ring	303392	X							X	X
ASE with O-ring	303393		X				X	X		
ASE with O-ring	303398		X						X	X
ASE with O-ring	303395			X			X	X		
ASE with O-ring	303396			X					X	X
ASE with O-ring	278006				X	X		X		
ASE with O-ring	278007				X	X			X	X
Bypass push button valve	278008				X	X		X	X	X

Einzelmagnetventile
Single solenoid valves



Produktgruppe Product Group	Ersatzteile • Replacement parts Bezeichnung • Designation
Einzelmagnetventile Single solenoid valves	IP 54/Ersatzmagnete/Replacement solenoids SV..., MV..., ZR..., LGV...,LV-D...
	IP 65/Ersatzmagnete/Replacement solenoids SV..., MV..., ZR..., LGV...,LV-D...

IP 54_Ersatzmagnete_Replacement solenoids SV..., MV..., ZR..., LGV..., LV-D...

Artikelbezeichnung Article designation	Bestell-Nr. Order no.	Kommentar Comment	Ventil Typ Valve Type	12 V DC	24 V AC	100 V AC	110 V AC	120 V AC (US)	200 V AC	230 V AC	24 V DC	
Solenoid 01	216879		MV 502 MV 502/1							X		
	231092											X
	233101							X			X	
	230526											
Solenoid 25.1	252237		ZRDLE 407/5						X			
	216877		ZRDLE 410/5							X		
Solenoid 35.1	216878		ZRDLE 415/5 ZRDLE 420/5							X		
	229966			X								
Solenoid 100	232862				X							
	230953		LGV 507/5			X						
	308818	EC01*	LGV 5020/5			X						
	306562	EC01*	MVD 203/5***				X					
	306563	EC05**	MVD 205/5***				X					
			MVD 503/5				X					
			MVD 505/5					X				
			MVDLE 203/5***						X			
			MVDLE 205/5***							X		
		EC01*	MVDLE 503/5							X		
		EC01*	MVD 505/6 (US)								X	
		EC05**	MVDLE 205/6 (US)								X	
		EC01*										X
	EC05**										X	

*EC01: elektrischer Anschluss über M20-Verschraubung / Electrical connection with M20 cable gland

**EC05: elektrischer Anschluss über Leitungsdose / Electrical connection via line socket

*** Japanische Ausführung / Japanese version

IP 54_Ersatzmagnete_Replacement solenoids SV..., MV..., ZR..., LGV..., LV-D...

Artikelbezeichnung Article designation	Bestell-Nr. Order no.	Kommentar Comment	Ventil Typ Valve Type	12 V DC	24 V AC	100 V AC	110 V AC	120 V AC (US)	200 V AC	230 V AC	24 V DC	
Solenoid 120	306568	EC01*	MVDLE 505/5 MV 1005				X					
	306569	EC05**					X					
	306570	EC01*								X		
	306571	EC05**									X	
	306572	EC01*										X
	306573	EC05**										X
Solenoid 200	229968			X								
	308823	EC01*		X								
	232852				X							
	230972		LV-D 210/4 MVD 207/5***			X						
	308818	EC01*	MVD 210/5***			X						
	306574	EC01*	MVD 507/5 MVD 510/5				X					
	306575	EC05**	MVDLE 207/5***				X					
	230996		MVDLE 210/5***					X				
	230998		MVDLE 507/5 MVD 507/6 (US)						X			
	308820	EC01*	MVD 510/6 (US)						X			
	306576	EC01*	MVDLE 207/6 (US)							X		
	306577	EC05**	MVDLE 210/6 (US)							X		
	306578	EC01*									X	
306579	EC05**									X		

*EC01: elektrischer Anschluss über M20-Verschraubung / Electrical connection with M20 cable gland

**EC05: elektrischer Anschluss über Leitungsdose / Electrical connection via line socket

*** Japanische Ausführung / Japanese version

IP 54_Ersatzmagnete_Replacement solenoids SV..., MV..., ZR..., LGV..., LV-D...

Artikelbezeichnung Article designation	Bestell-Nr. Order no.	Kommentar Comment	Ventil Typ Valve Type	12 V DC	24 V AC	100 V AC	110 V AC	120 V AC (US)	200 V AC	230 V AC	24 V DC	
Solenoid 250	225787		MV 1007 MVDLE 510/5							X		
	306580	EC01*					X					
	306581	EC05**					X					
	306582	EC01*									X	
	306583	EC05**									X	
	306584	EC01*										X
Solenoid 280	306585	EC05**									X	
	230975		LV-D 215/4			X						
	231000		MVD 215/5***						X			
Solenoid 300	213407		MVDLE 215/5***							X		
	230977		LV-D 220/5			X						
	308821		MVD 215/5***			X						
	306586		MVD 220/5***									
	306587		MVD 515/5				X					
	230989		MVD 5040/5				X					
	231002		MVDLE 215/5***					X				
	231002		MVDLE 220/5***									
	308822		MVDLE 515/5						X			
	308822		MVDLE 5040/5						X			
	306588		MVD 512/6 (US)							X		
306589		MVD 515/6 (US)							X			
306589		MVDLE 220/6 (US)								X		
	306590										X	
	306591										X	

*EC01: elektrischer Anschluss über M20-Verschraubung / Electrical connection with M20 cable gland

**EC05: elektrischer Anschluss über Leitungsdose / Electrical connection via line socket

*** Japanische Ausführung / Japanese version

IP 54_Ersatzmagnete_Replacement solenoids SV..., MV..., ZR..., LGV..., LV-D...

Artikelbezeichnung Article designation	Bestell-Nr. Order no.	Kommentar Comment	Ventil Typ Valve Type	12 V DC	24 V AC	100 V AC	110 V AC	120 V AC (US)	200 V AC	230 V AC	24 V DC
Solenoid 400	306592						X				
	306593		LV-D 225/5				X				
	230991		MVD 520/5					X			
	306594	EC01*	MVDLE 520/5							X	
	306595	EC05**	MVDLE 5050/5							X	
	306596	EC01*	MVD 520/6 (US)								X
	306597	EC05**	MVD 225/6 (US)								X
Solenoid 500	230992		MVDLE 225/6 (US)					X			
			MVDLE 230/6								
Solenoid 525	230993		MVD 525/6 (US)					X			

*EC01: elektrischer Anschluss über M20-Verschraubung / Electrical connection with M20 cable gland

**EC05: elektrischer Anschluss über Leitungsdose / Electrical connection via line socket

*** Japanische Ausführung / Japanese version

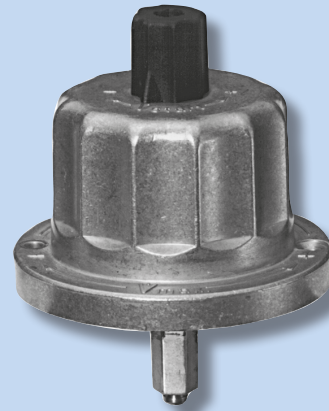
IP 65_Ersatzmagnete_Replacement solenoids SV..., MV..., ZR..., LGV..., LV-D...

Artikelbezeichnung Article designation	Bestell-Nr. Order no.	Ventil Typ Valve Type	12 V DC	24 V AC	100 V AC	110 V AC	120 V AC (US)	200 V AC	230 V AC	24-28 V DC
Solenoid 20	243603	SV 505 SV 507				X				
	243586							X		
	243878									X
Solenoid 30	243879	SV 510 SV 515		X						
	243604				X					
	243587								X	
Solenoid 40	243880	SV 520								X
	243881			X						
	243605					X				
	243588								X	
Solenoid 35.1	243882	ZRDLE 415/5 ZRDLE 420/5								X
	245803								X	
Solenoid 100	223155	LGV 507/5 MVD 203/5 MVD 205/5 MVD 503/5 MVD 505/5 MVDLE 203/5 MVDLE 205/5 MVDLE 503/5								X
	229974					X				
	229982									X
Solenoid 200	229976	LV-D 210/4 MVD 207/5 MVD 210/5 MVD 507/5 MVD 510/5 MVDLE 207/5 MVDLE 210/5 MVDLE 507/5				X				
	229984								X	
	224554									

IP 65_Ersatzmagnete_Replacement solenoids SV..., MV..., ZR..., LGV..., LV-D...

Artikelbezeichnung Article designation	Bestell-Nr. Order no.	Ventil Typ Valve Type	12 V DC	24 V AC	100 V AC	110 V AC	120 V AC (US)	200 V AC	230 V AC	24-28 V DC
Solenoid 280	229977	LV-D 215/4 MVD 215/5				X				
	229985	MVD 2040/5 MVDLE 215/5							X	
	224561	MVDLE 2040/5								X
Solenoid 300	229978	LV-D 220/5 MVD 215/5 MVD 220/5 MVD 515/5				X				
	229986	MVD 2040/5 MVD 2050/5 MVD 5040/5 MVDLE 215/5 MVDLE 220/5 MVDLE 515/5							X	
	224564	MVDLE 2040/5 MVDLE 2050/5 MVDLE 5040/5								X
Solenoid 400	229987	LV-D 225/5 MVD 225/5 MVD 520/5							X	
	229979	MVD 5050/5 MVDLE 225/5 MVDLE 520/5				X				
	224570	MVDLE 5050/5								X

Hydraulikbremse
Hydraulic brake



Produktgruppe Product Group	Ersatzteile • Replacement parts Bezeichnung • Designation
Hydraulikbremse Hydraulic brake	Hydraulikbremse Hydraulic brake DMV..., MB..., MV..., ZR..., SV...

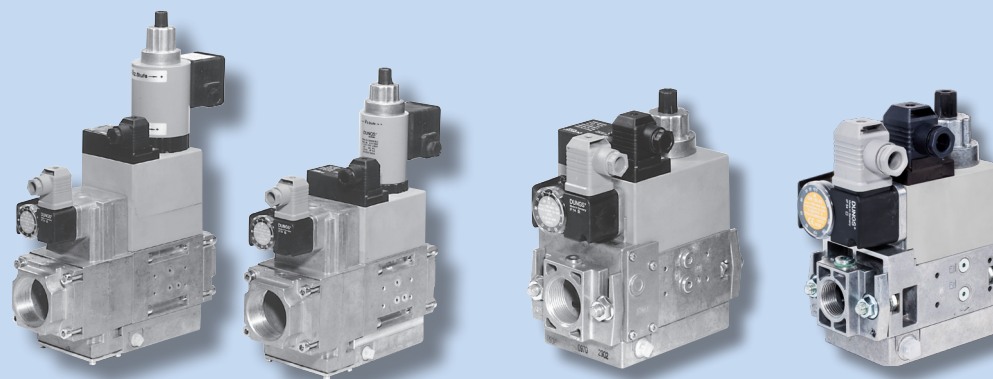
Hydraulikbremse_Hydraulic brake DMV..., MB..., MV..., ZR..., SV...

Artikelbezeichnung Article designation	Bestell-Nr. Order no.	Rp 3/8	Rp 1/2	Rp 3/4	Rp 1	Rp 1 1/4	Rp 1 1/2	Rp 2	Rp 2 1/2	DN 40	DN 50	DN 65	DN 80	DN 100	DN 125	H10	H10/4	H11	H12/3	H12	H12/6	H12/7	H12/8	H13
DMV-DLE 503/11	224455	X																						X
DMV-DLE 5040/11 - 5050/11	224457									X	X										X			
DMV-DLE 507 - 520/11	224457			X			X														X			
DMV-Z 507/512	223159			X															X					
DMV-Z 520	224457						X														X			
DMV-DLE 525/11	223158								X									X						X
DMV-DLE 5065/11 - 5080/11	223158											X	X					X						
DMV-DLE 5100/11 - 5125/11	223157													X	X	X								
DMV-DLE 525/11 eco	240458								X														X	
DMV-DLE 5065/11 eco	240458											X											X	
DMV-DLE 5080/11 eco	223158												X					X						
DMV-DLE 5100/11 eco	223157													X		X								
DMV-DLE 5125/11 eco	246123														X		X							
DMV-DLE 5065/12	223158																		X					
DMV-DLE 5080/12	223157															X								
DMV-DLE 5100/12	246123																X							
MB 053/403 B01	224455	X																						X
MB-DLE/ZRDLE 405-415 B01/B07 bis/until 2016	223159		X				X												X					
MB-DLE/ZRDLE 405-407 B01/B07 ab/from 2016	273816		X	X																			X	
MB-DLE/ZRDLE 410-415 B01/B07 bis/until 03/18	223159				X	X	X												X					
MB-DLE/ZRDLE 410-415 B01/B07 ab/from 04/18	224457				X	X	X														X			
MB-DLE/ZRDLE 420 B01	224457							X													X			
MVDLE 203/5 + 503/5 bis/until 2016	223159	X																	X					
MVDLE 203/5 + 503/5 ab/from 2016	273816	X																						X
MVDLE 205/5 + 505/5	223159		X																X					
MVDLE 207/5 - 2050/5	223158			X							X								X					
MVDLE 507/5 -5050/5	223158			X							X								X					
MVDLE 225/5	223157								X							X								

Hydraulikbremse_Hydraulic brake DMV..., MB..., MV..., ZR..., SV...

Artikelbezeichnung Article designation	Bestell-Nr. Order no.	Rp 3/8	Rp 1/2	Rp 3/4	Rp 1	Rp 1 1/4	Rp 1 1/2	Rp 2	Rp 2 1/2	DN 40	DN 50	DN 65	DN 80	DN 100	DN 125	H10	H10/4	H11	H12/3	H12	H12/6	H12/7	H12/8	H13
ZRDLE 407/5 - 420/5	223158			X							X							X						
SV-DLE 507-520	224457			X				X													X			

**MB-B
GasMultiBloc®**



Produktgruppe Product Group	Ersatzteile • Replacement parts Bezeichnung • Designation
MB-B MultiBloc®	230 V AC/Ersatzmagnete/Replacement solenoid MB-...B...
	Leiterplatten/Replacement PCBs MB-B
	110 V AC/Ersatzmagnete/Replacement solenoid MB-...B...
	Filtereinsatz/Filter insert MB-...B...

230 V AC_Ersatzmagnete_Replacement solenoid MB-...B...

Artikelbezeichnung Article designation	Bestell-Nr. Order no.	Ansteuerung Opening	Magnet Typ Coil type	Rp 3/8	Rp 1/2	Rp 3/4	Rp 1	Rp 1 1/4	Rp 1 1/2	Rp 2	Rp 2 1/2	DN 40	DN 50	DN 65	DN 80	DN 100	DN 125	DN 150	DN 200	403 053	405 407	410 412	415	420	425
MB-D	224397	simultaneous	1000	X																X					
MB-D	224420	separate	1010	X																X					
MB-D B01	240115	simultaneous	1100		X	X															X				
MB-B B01	224421	separate	1110		X	X															X				
MB-D B07 MB-ZR B07 1.stage	224422	separate	1120		X	X															X				
MB-ZR B01 1.stage	224402	simultaneous	1101		X	X															X				
MB-ZR B01 2.stage	224400	simultaneous	1150		X	X															X				
MB-ZR B01 2.stage	224429	separate	1150		X	X															X				
MB-ZR B07 2.stage	224429	separate	1150 *		X	X															X				
MB-VEF B01	224423	simultaneous	1105		X	X															X				
MB-VEF B01	225000	separate	1111		X	X															X				
MB-D B01	224399	simultaneous	1200				X	X														X			
MB-D B01	224399	simultaneous	1200						X														X		
MB-D B01 MB-ZR B01 MB-VEF 1.stage	224424	separate	1210				X	X														X			
MB-D B01	224424	separate	1210						X														X		
MB-D B07 MB-ZR B07 1.stage	224425	separate	1220				X	X														X			
MB-ZR B01 1.stage	224403	simultaneous	1201				X	X														X			
MB-ZR B01 1.stage	224403	simultaneous	1201						X														X		
MB-ZR B01 2.stage	224401	simultaneous	1250				X	X														X			
MB-ZR B01 2.stage	224401	simultaneous	1250						X														X		
MB-ZR B01 2.stage	224428	separate	1250 *				X	X														X			
MB-ZR B01 2.stage	224428	separate	1250 *						X														X		
MB-ZR B07 2.stage	224428	separate	1250 *				X	X														X			

230 V AC_Ersatzmagnete_Replacement solenoid MB-...B...

Artikelbezeichnung Article designation	Bestell-Nr. Order no.	Ansteuerung Opening	Magnet Typ Coil type	Rp 3/8	Rp 1/2	Rp 3/4	Rp 1	Rp 1 1/4	Rp 1 1/2	Rp 2	Rp 2 1/2	DN 40	DN 50	DN 65	DN 80	DN 100	DN 125	DN 150	DN 200	403 053	405 407	410 412	415	420	425	
* Terminal box																										
MB-VEF B01	224426	simultaneous	1205				X	X																		
MB-VEF B01	224424	separate	1210				X	X														X				
MB-VEF B01	224426	simultaneous	1205						X														X			
MB-VEF B01	241322	separate	1211						X													X				
MB-D...B01	228294	simultaneous	1230							X															X	
MB-ZR B01 1.stage	228295	simultaneous	1231							X															X	
MB-D B01	228296	separate	1232							X															X	
MB-ZR B01 1.stage	228296	separate	1232							X															X	
MB-ZR B01 2.stage	228297	simultaneous	1350							X															X	
MB-ZR B01 2.stage	228298	separate	1350 *							X															X	
MB-VEF B01	227251	simultaneous	1215							X															X	
MB-VEF	225048	separate	1212							X															X	
MB-VEF	226328	simultaneous	1405								X															X
MB-VEF	225167	separate	1411								X															X

Leiterplatten_PCBs MB-B (1_Stück_Pieces)

MB-Typ MB-Type	Bestell-Nr. Order no.	Magnet Typ Coil type	Spannung Voltage											
				12 V DC	24 V AC	100 V AC	110 V AC	120 V AC (US)	200 V AC	230 V AC	24-28 V DC	48 V DC		
MB-DLE 405 B01 S20/S50	263234	1100										X		
MB-DLE 405 B01 S22/S52	263235	1110										X		
MB-DLE 407 B01 S20/S50	263234	1100										X		
MB-DLE 407 B07 S22/S52	263236	1120										X		
MB-DLE 407 B01 S22/S52	263235	1110										X		
MB-DLE 410 B01 S20/S50	263237	1200										X		
MB-DLE 410 B01 S22/S52	263238	1210										X		
MB-DLE 412 B01 S20/S50	263237	1200										X		
MB-DLE 412 B01 S22/S52	263238	1210										X		
MB-DLE 415 B01 S20/S50	263237	1200										X		
MB-DLE 415 B01 S22/S52	263238	1210										X		
MB-DLE 420 B01 S20/S50	263239	1230										X		
MB-DLE 420 B01 S22/S52	263240	1232										X		
MB-ZRDLE 405 B01 S20/S50	263241	1101	first stage									X		
MB-ZRDLE 405 B01 S20/S50	263241	1150	second stage*									X		
MB-ZRDLE 407 B01 S20/S50	263241	1101	first stage									X		
MB-ZRDLE 407 B01 S20/S50	263241	1150	second stage*									X		
MB-ZRDLE 410 B01 S20/S50	263242	1201	first stage									X		
MB-ZRDLE 410 B01 S20/S50	263242	1250	second stage*									X		
MB-ZRDLE 412 B01 S20/S50	263242	1201	first stage									X		
MB-ZRDLE 412 B01 S20/S50	263242	1250	second stage*									X		
MB-ZRDLE 415 B01 S20/S50	263242	1201	first stage									X		
MB-ZRDLE 415 B01 S20/S50	263242	1250	second stage*									X		
MB-ZRDLE 420 B01 S20/S50	263243	1231	first stage									X		
MB-ZRDLE 420 B01 S20/S50	263243	1350	second stage*									X		

Leiterplatten_PCBs MB-B (1_Stück_Pieces)

MB-Typ MB-Type	Bestell-Nr. Order no.	Magnet Typ Coil type	Spannung Voltage	12 V DC	24 V AC	100 V AC	110 V AC	120 V AC (US)	200 V AC	230 V AC	24-28 V DC	48 V DC
MB-VEF 407 B01 S10/S30	263244	1105								X		
MB-VEF 407 B01 S12/S32	266144	1111								X		
MB-VEF 412 B01 S10/S30	263245	1205								X		
MB-VEF 412 B01 S12/S32	263238	1210								X		
MB-VEF 415 B01 S10/S30	263245	1205								X		
MB-VEF 415 B01 S12/S32	266147	1211								X		
MB-VEF 420 B01 S10/S30	263239	1215								X		
MB-VEF 420 B01 S12/S32	266147	1212								X		
MB-VEF 425 B01 S02/S30	263239	1405								X		
MB-VEF 425 B01 S12/S32	266147	1411								X		

* Elektrischer Anschluß über Haupt-PCB / Electrical connection via main PCB

110 V AC_Ersatzmagnete_Replacement solenoid MB-...B...

Artikelbezeichnung Article designation	Bestell-Nr. Order no.	Ansteuerung Opening	Magnet Typ Coil type	Rp 3/8	Rp 1/2	Rp 3/4	Rp 1	Rp 1 1/4	Rp 1 1/2	Rp 2	Rp 2 1/2	DN 40	DN 50	DN 65	DN 80	DN 100	DN 125	DN 150	DN 200	403 053	405 407	410 412	415	420	425
MB-D	231091	simultaneous	1000	X																X					
MB-D B01	245879	simultaneous	1100		X	X															X				
MB-B B01	232371	separate	1110		X	X															X				
MB-D B07 MB-ZR B07 1.stage	230003	separate	1120		X	X															X				
MB-ZR B01 1.stage	230525	simultaneous	1101		X	X															X				
MB-ZR B01 2.stage	230523	simultaneous	1150		X	X															X				
MB-ZR B01 2.stage	230945	separate	1150 *		X	X															X				
MB-ZR B07 2.stage	230945	separate	1150 *		X	X															X				
MB-VEF B01	239241	simultaneous	1105		X	X															X				
MB-D B01	245886	simultaneous	1200				X	X															X		
MB-D B01	245886	simultaneous	1200						X														X		
MB-D B01	228619	separate	1210				X	X															X		
MB-D B01	228619	separate	1210						X														X		
MB-D B07 MB-ZR B07 1.stage	230005	separate	1220				X	X															X		
MB-ZR B01 1.stage	230006	simultaneous	1201				X	X														X			
MB-ZR B01 1.stage	230006	simultaneous	1201						X														X		
MB-ZR B01 2.stage	230007	simultaneous	1250				X	X														X			
MB-ZR B01 2.stage	230007	simultaneous	1250						X														X		
MB-ZR B01 2.stage	228552	separate	1250 *				X	X														X			
MB-ZR B01 2.stage	228552	separate	1250 *						X														X		
MB-ZR B07 2.stage	228552	separate	1250 *				X	X															X		
MB-VEF B01	231281	simultaneous	1205				X	X															X		
MB-VEF B01	231281	simultaneous	1205						X														X		

* Anschlusskasten, Terminal box

110 V AC_Ersatzmagnete_Replacement solenoid MB-...B...

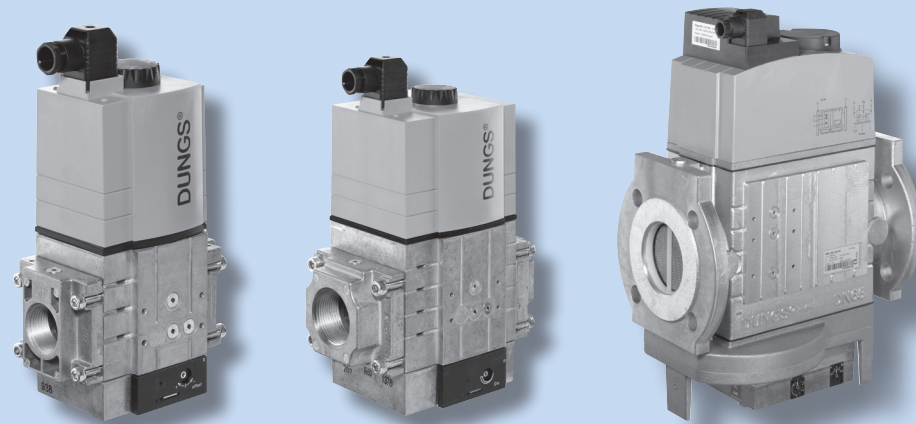
Artikelbezeichnung Article designation	Bestell-Nr. Order no.	Ansteuerung Opening	Magnet Typ Coil type	Rp 3/8	Rp 1/2	Rp 3/4	Rp 1	Rp 1 1/4	Rp 1 1/2	Rp 2	Rp 2 1/2	DN 40	DN 50	DN 65	DN 80	DN 100	DN 125	DN 150	DN 200	403 053	405 407	410 412	415	420	425
MB-D...B01	228299	simultaneous	1230							X															X
MB-VEF B01	228299	simultaneous	1230							X															X
MB-VEF B01	225049	separate	1212							X															X
MB-ZR B01 1.stage	245887	simultaneous	1231							X															X
MB-ZR B01 1.stage	228301	separate	1232							X															X
MB-D B01	228301	separate	1232							X															X
MB-ZR B01 2.stage	228302	simultaneous	1350							X															X
MB-ZR B01 2.stage	228303	separate	1350 *							X															X
MB-VEF B01	225168	separate	1411							X															X

* Anschlusskasten, Terminal box

Filtereinsatz_Filter insert MB-...B...

Artikelbezeichnung Article designation	Bestell-Nr. Order no.	Typ Type	Farbe Color	Rp 3/8	Rp 1/2	Rp 3/4	Rp 1	Rp 1 1/4	Rp 1 1/2	Rp 2	Rp 2 1/2	DN 40	DN 50	DN 65	DN 80	DN 100	DN 125	DN 150	DN 200	403	405 407	410 412	415 420	425
Filter insert	222118	double filter		X																X				
Filter insert G4	222119		● blue		X																X			
Filter insert G4	222120		● blue				X	X														X		
Filter insert G4	226997	pre-mount filter	● blue						X	X													X	
Filter insert F7	252339		● pink		X																X			
Filter insert F7	252340		● pink				X	X														X		
Filter insert F7	252341		● pink						X	X													X	
Fine sieve	271103				X	X															X			
Fine sieve	279593						X	X														X		

**MBC
GasMultiBloc®**



Produktgruppe Product Group	Ersatzteile • Replacement parts Bezeichnung • Designation
MBC MultiBloc®	Ersatzmagnete/Replacement solenoid MBC
	Leiterplatten/Replacement PCBs MBC
	Filtereinsatz/Filter insert MBC
	Sollwertfedern/Setpoint springs MBC-SE (DN 65-100)

Ersatzmagnete Replacement solenoid MBC

Artikelbezeichnung Article designation	Mag. Nr. Solenoid type	Magnetgehäuse Solenoid housing	Bestell-Nr. Order no.	Ansteuerung Opening	12 V DC	24 V AC	100 V AC	110 V AC	120 V AC (US)	200 V AC	230 V AC	24-28 V DC	48 V DC
MBC-300-...	032/P	Metall/metal	251136	separate	X								
MBC-300-...	032/P	Metall/metal	250680	separate		X							
MBC-300-...	032/P	Metall/metal	250371	separate				X					
MBC-300-...	032/P	Metall/metal	250372	separate							X		
MBC-300-...	032/P	Metall/metal	252191	separate								X	
MBC-300-...	032/2P	Kunststoff/plastic	265302	separate	X								
MBC-300-...	032/2P	Kunststoff/plastic	265298	separate				X					
MBC-300-...	032/2P	Kunststoff/plastic	265296	separate							X		
MBC-300-...	032/2P	Kunststoff/plastic	265300	separate								X	
MBC-700-...	042/P	Metall/metal	251226	separate	X								
MBC-700-...	042/P	Metall/metal	250681	separate		X							
MBC-700-...	042/P	Metall/metal	250175	separate				X					
MBC-700-...	042/P	Metall/metal	250375	separate							X		
MBC-700-...	042/P	Metall/metal	252192	separate								X	
MBC-700-...	042/2P	Kunststoff/plastic	265299	separate				X					
MBC-700-...	042/2P	Kunststoff/plastic	265297	separate							X		
MBC-700-...	042/2P	Kunststoff/plastic	265301	separate								X	
MBC-1200-...	052/P	Kunststoff/plastic	252613	separate				X					
MBC-1200-...	052/P	Kunststoff/plastic	250376	separate							X		
MBC-1200-...	052/P	Kunststoff/plastic	252193	separate								X	
MBC-1900-...	1511/2P	Kunststoff/plastic	253713	separate				X					
MBC-1900-...	1511/2P	Kunststoff/plastic	247869	separate							X		
MBC-1900-...	1511/2P	Kunststoff/plastic	248503	separate								X	
MBC-3100-...	1611/2P	Kunststoff/plastic	253677	separate				X					
MBC-3100-...	1611/2P	Kunststoff/plastic	247870	separate							X		
MBC-3100-...	1611/2P	Kunststoff/plastic	248504	separate								X	

Ersatzmagnete Replacement solenoid MBC

Artikelbezeichnung Article designation	Mag. Nr. Solenoid type	Magnetgehäuse Solenoid housing	Bestell-Nr. Order no.	Ansteuerung Opening	12 V DC	24 V AC	100 V AC	110 V AC	120 V AC (US)	200 V AC	230 V AC	24-28 V DC	48 V DC
MBC-5000-...	1711/2P	Kunststoff/plastic	253676	separate				X					
MBC-5000-...	1711/2P	Kunststoff/plastic	247871	separate							X		
MBC-5000-...	1711/2P	Kunststoff/plastic	248505	separate								X	

Leiterplatten_PCBs MBC

Artikelbezeichnung Article designation	Bestell-Nr. Order no.	Kommentar Comment	Magnet Typ Coil type	Rp 3/8	Rp 1/2	Rp 3/4	Rp 1	Rp 1 1/4	Rp 1 1/2	Rp 2	Rp 2 1/2	DN 40	DN 50	DN 65	DN 80	DN 100	DN 125	DN 150	DN 200	12 V DC	24 V AC	100 V AC	110 V AC	120 V AC (US)	200 V AC	230 V AC	24-28 V DC
MBC-1900 ...	248492		1511/2P											X												X	
MBC-1900 ...	257137		1511/2P											X									X				
MBC-1900 ...	257604		1511/2P											X													X
MBC-3100 ...	248492		1611/2P												X											X	
MBC-3100 ...	257137		1611/2P												X								X				
MBC-3100 ...	257604		1611/2P																								X
MBC-5000 ...	248492		1711/2P													X										X	
MBC-5000 ...	257137		1711/2P													X											
MBC-5000 ...	257604		1711/2P													X											X

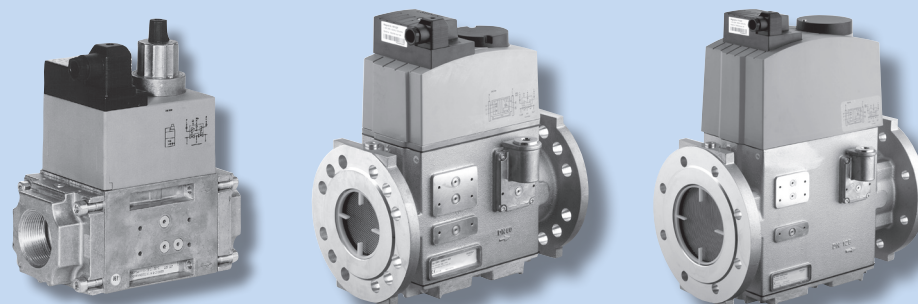
Filter MBC-SE/VEF 300-1200

Artikelbezeichnung Article designation	Bestell-Nr. Order no.	Typ Type	Farbe Color	MBC MBC	DN / Rp DN / Rp	Rp 3/8	Rp 1/2	Rp 3/4	Rp 1	Rp 1 1/4	Rp 1 1/2	Rp 2	Rp 2 1/2	DN 40	DN 50	DN 65	DN 80	DN 100	DN 125	DN 150	DN 200	
Filter insert G4	241916	Standard	● blue	MBC-300	Rp 1				X													
Filter insert G4	242072	Standard	● blue	MBC-700	Rp 1 1/2						X											
Filter insert G4	245624	Standard	● blue	MBC-1200	Rp 2							X										
Filter insert F7	252342		● pink	MBC-300	Rp 1				X													
Filter insert F7	252343		● pink	MBC-700	Rp 1 1/2						X											
Filter insert F7	252344		● pink	MBC-1200	Rp 2							X										

MBC-...-SE DN 65 - DN 100 Sollwertfedern_Setpoint springs

Artikelbezeichnung Article designation	Bestell-Nr. Order no.	Farbe Color	p _{max.} [mbar]	Rp 3/8	Rp 1/2	Rp 3/4	Rp 1	Rp 1 1/4	Rp 1 1/2	Rp 2	Rp 2 1/2	DN 40	DN 50	DN 65	DN 80	DN 100	DN 125	DN 150	DN 200
MBC-...-SE Set	246021	---	4 - 20 mbar											X	X	X			
MBC-...-SE Set	246022	● red	20 - 40 mbar											X	X	X			
MBC-...-SE Set	246023	● black	40 - 80 mbar											X	X	X			
MBC-...-SE Set	246024	● green	80 - 150 mbar											X	X	X			

DMV-...
Doppelmagnetventile
Double solenoid valves



Produktgruppe Product Group	Ersatzteile • Replacement parts Bezeichnung • Designation
DMV-... Doppelmagnetventil Double solenoid valves	Ersatzmagnete/Replacement solenoid DMV-...
	Ersatzmagnete/Replacement solenoid DMV-.../11 eco, DMV-.../12
	Leiterplatten/Replacement PCBs DMV...
	Leiterplatten/Replacement PCBs DMV-.../11 eco, DMV-.../12

Ersatzmagnete_Replacement solenoid DMV...

Artikelbezeichnung Article designation	Gültig ab Valid from	Bestell-Nr. Order no.	Magnet Typ Coil type	Steckeranschluss Plug connection	PG-Verschraubung PG cable entry	Rp 3/8	Rp 1/2	Rp 3/4	Rp 1	Rp 1 1/4	Rp 1 1/2	Rp 2	Rp 2 1/2	DN 40	DN 50	DN 65	DN 80	DN 100	DN 125	12 V DC	24 V AC	100 V AC	110 V AC	120 V AC (US)	200 V AC	230 V AC	24-28 V DC	48 V DC
DMV-D 503/11		224999	1011	X		X																					X	
DMV-D 503/11		224997	1011	X		X																	X	X				
DMV-D 503/11		224980	1011	X		X																				X		
DMV-D 503/11		253269	1011	X		X															X							
DMV-D 507/11 DMV-Z...507/11		238554	1111	X				X														X						
DMV-D 507/11 DMV-Z...507/11		225003	1111	X					X																			X
DMV-D 507/11 DMV-Z...507/11		225001	1111	X				X															X	X				
DMV-D 507/11 DMV-Z...507/11		225000	1111	X					X																		X	
DMV-D 507/11 DMV-Z...507/11		225002	11111																									X
DMV 512/11 DMV-Z...512/11		238825	1211	X						X																		X
DMV 512/11 DMV-Z...512/11		225028	1211	X						X																		X
DMV-D 512/11 DMV-Z...512/11		225005	1211	X						X													X	X				
DMV-D 512/11 DMV-Z...512/11		225004	1211	X						X																X		
DMV-D 520/11 DMV-Z...520/11		225051	1212	X								X																X
DMV-D 520/11 DMV-Z...520/11		225049	1212	X								X											X	X				
DMV-D 520/11 DMV-Z...520/11		225048	1212	X								X															X	

Ersatzmagnete_Replacement solenoid DMV...

Artikelbezeichnung Article designation	Gültig ab Valid from	Bestell-Nr. Order no.	Magnet Typ Coil type	Steckeranschluss Plug connection	PG-Verschraubung PG cable entry	Rp 3/8	Rp 1/2	Rp 3/4	Rp 1	Rp 1 1/4	Rp 1 1/2	Rp 2	Rp 2 1/2	DN 40	DN 50	DN 65	DN 80	DN 100	DN 125	12 V DC	24 V AC	100 V AC	110 V AC	120 V AC (US)	200 V AC	230 V AC	24-28 V DC	48 V DC
DMV-D 5040/11 DMV-D 5050/11	1997-09	225051	1212	X											X												X	
DMV-D 5040/11 DMV-D 5050/11	1997-09	225049	1212	X											X								X	X				
DMV-D 5040/11 DMV-D 5050/11	1997-09	225048	1212	X											X											X		
DMV-D 5040/11 DMV-D 5050/11	1997-09	225093	1262		X										X												X	
DMV-D 5040/11 DMV-D 5050/11	1997-09	225091	1262		X										X								X	X				
DMV-D 5040/11 DMV-D 5050/11	1997-09	225090	1262		X										X											X		
DMV-D 5065/11		225170	1411	X												X											X	
DMV-D 5065/11		225168	1411	X												X							X	X				
DMV-D 5065/11		225167	1411	X												X										X		
DMV-D 5065/11		225101	1461		X											X											X	
DMV-D 5065/11		225099	1461		X											X							X	X				
DMV-D 5065/11		225098	1461		X											X										X		
DMV-D 5080/11		225219	1511	X													X										X	
DMV-D 5080/11		225217	1511	X													X						X	X				
DMV-D 5080/11		225171	1511	X													X									X		
DMV-D 5080/11		225105	1561		X												X										X	
DMV-D 5080/11		225103	1561		X												X						X	X				
DMV-D 5080/11		225102	1561		X												X									X		
DMV-D 5100/11		225224	1611	X															X								X	
DMV-D 5100/11		225222	1611	X														X					X	X				

Ersatzmagnete_Replacement solenoid DMV...

Artikelbezeichnung Article designation	Gültig ab Valid from	Bestell-Nr. Order no.	Magnet Typ Coil type	Steckeranschluss Plug connection	PG-Verschraubung PG cable entry	Rp 3/8	Rp 1/2	Rp 3/4	Rp 1	Rp 1 1/4	Rp 1 1/2	Rp 2	Rp 2 1/2	DN 40	DN 50	DN 65	DN 80	DN 100	DN 125	12 V DC	24 V AC	100 V AC	110 V AC	120 V AC (US)	200 V AC	230 V AC	24-28 V DC	48 V DC
DMV-D 5100/11		225220	1611	X														X								X		
DMV-D 5100/11		225109	1661		X													X									X	
DMV-D 5100/11		225107	1661		X													X				X	X					
DMV-D 5100/11		225106	1661		X													X								X		
DMV-D 5125/11		225228	1711	X															X								X	
DMV-D 5125/11		225226	1711	X															X			X	X					
DMV-D 5125/11		225225	1711	X															X							X		
DMV-D 5125/11		225115	1761		X														X								X	
DMV-D 5125/11		225113	1761		X														X			X	X					
DMV-D 5125/11		225110	1761		X														X							X		

Ersatzmagnete_Replacement solenoid DMV-... /11 eco, DMV-... /12

Artikelbezeichnung Article designation	Gültig Valid	Bestell-Nr. Order no.	Magnet Typ Coil type	getrennt angesteuert Independently operated	Rp 1 ¼	Rp 1 ½	Rp 2	Rp 2 ½	DN 40	DN 50	DN 65	DN 80	DN 100	DN 125	24 V AC	100 V AC	110 V AC	120 V AC (US)	200 V AC	230 V AC	24-28 V DC
DMV 525/11 eco	until 2010-12	248494	1411/2P	X			X				X									X	
DMV-D 525/11 eco	until 2010-12	248494	1411/2P	X			X				X										X
DMV 5065/11 eco	until 2010-12	248494	1411/2P	X			X				X										X
DMV-D 5065/11 eco	until 2010-12	248494	1411/2P	X			X				X										X
DMV 5065/11 eco	2011-01	256633	1411/2P	X			X				X										X
DMV 525/11 eco	2011-01	256633	1411/2P	X			X				X										X
DMV 5065/11 eco	2011-01	255478	1411/2P	X			X				X						X				
DMV 525/11 eco	2011-01	255478	1411/2P	X			X				X						X				
DMV 5065/11 eco	2011-01	255477	1411/2P	X			X				X										X
DMV 525/11 eco	2011-01	255477	1411/2P	X			X				X										X
DMV-D 5065/11 eco	2011-01	256630	1411/2P	X			X				X						X				
DMV-D 525/11 eco	2011-01	256630	1411/2P	X			X				X						X				
DMV-D 5065/11 eco	2011-01	256629	1411/2P	X			X				X										X
DMV-D 525/11 eco	2011-01	256629	1411/2P	X			X				X										X
DMV-DLE 5065/11 eco	2011-01	256632	1411/2PL	X							X						X				
DMV-DLE 525/11 eco	2011-01	256631	1411/2PL	X			X				X										X
DMV-DLE 5065/11 eco	2011-01	256631	1411/2PL	X							X										X
DMV 5080/11 eco		248503	1511/2P	X							X	X									X
DMV-D 5080/11 eco		248503	1511/2P	X							X	X									X
DMV 5065/12		248503	1511/2P	X							X	X									X
DMV-D 5065/12		248503	1511/2P	X							X	X									X
DMV 5080/11 eco		253713	1511/2P	X							X	X					X				
DMV-D 5080/11 eco		253713	1511/2P	X							X	X					X				
DMV 5065/12		253713	1511/2P	X							X	X					X				
DMV-D 5065/12		253713	1511/2P	X							X	X					X				
DMV 5080/11 eco		247869	1511/2P	X							X	X									X

Ersatzmagnete_Replacement solenoid DMV-... /11 eco, DMV-... /12

Artikelbezeichnung Article designation	Gültig Valid	Bestell-Nr. Order no.	Magnet Typ Coil type	getrennt angesteuert Independently operated	Rp 1 ¼	Rp 1 ½	Rp 2	Rp 2 ½	DN 40	DN 50	DN 65	DN 80	DN 100	DN 125	24 V AC	100 V AC	110 V AC	120 V AC (US)	200 V AC	230 V AC	24-28 V DC	
DMV-D 5080/11 eco		247869	1511/2P	X							X	X								X		
DMV 5065/12		247869	1511/2P	X							X	X									X	
DMV-D 5065/12		247869	1511/2P	X							X	X									X	
DMV-DLE 5080/11 eco		262826	1511/2PL	X							X	X					X					
DMV-DLE 5065/12		262826	1511/2PL	X							X	X					X					
DMV-DLE 5080/11 eco		248496	1511/2PL	X							X	X									X	
DMV-DLE 5065/12		248496	1511/2PL	X							X	X									X	
DMV 5100/11 eco		248504	1611/2P	X								X	X									X
DMV-D 5100/11 eco		248504	1611/2P	X								X	X									X
DMV 5080/12		248504	1611/2P	X								X	X									X
DMV-D 5080/12		248504	1611/2P	X								X	X									X
DMV 5100/11 eco		253677	1611/2P	X								X	X				X					
DMV-D 5100/11 eco		253677	1611/2P	X								X	X				X					
DMV 5080/12		253677	1611/2P	X								X	X				X					
DMV-D 5080/12		253677	1611/2P	X								X	X				X					
DMV 5100/11 eco		247870	1611/2P	X								X	X									X
DMV-D 5100/11 eco		247870	1611/2P	X								X	X									X
DMV 5080/12		247870	1611/2P	X								X	X									X
DMV-D 5080/12		247870	1611/2P	X								X	X									X
DMV-DLE 5100/11 eco		262825	1611/2PL	X								X	X				X					
DMV-DLE 5080/12		262825	1611/2PL	X								X	X				X					
DMV-DLE 5100/11 eco		248498	1611/2PL	X								X	X									X
DMV-DLE 5080/12		248498	1611/2PL	X								X	X									X
DMV 5125/11 eco		248505	1711/2P	X									X	X								X
DMV-D 5125/11 eco		248505	1711/2P	X									X	X								X
DMV 5100/12		248505	1711/2P	X									X	X								X

Ersatzmagnete_Replacement solenoid DMV-.../11 eco, DMV-.../12

Artikelbezeichnung Article designation	Gültig Valid	Bestell-Nr. Order no.	Magnet Typ Coil type	getrennt angesteuert Independently operated	Rp 1 ¼	Rp 1 ½	Rp 2	Rp 2 ½	DN 40	DN 50	DN 65	DN 80	DN 100	DN 125	24 V AC	100 V AC	110 V AC	120 V AC (US)	200 V AC	230 V AC	24-28 V DC
DMV-D 5100/12		248505	1711/2P	X									X	X							X
DMV 5125/11 eco		253676	1711/2P	X									X	X			X				
DMV-D 5125/11 eco		253676	1711/2P	X									X	X			X				
DMV 5100/12		253676	1711/2P	X									X	X			X				
DMV-D 5100/12		253676	1711/2P	X									X	X			X				
DMV 5125/11 eco		247871	1711/2P	X									X	X							X
DMV-D 5125/11 eco		247871	1711/2P	X									X	X							X
DMV 5100/12		247871	1711/2P	X									X	X							X
DMV-D 5100/12		247871	1711/2P	X									X	X							X
DMV-DLE 5125/11 eco		262824	1711/2PL	X									X	X			X				
DMV-DLE 5100/12		262824	1711/2PL	X									X	X			X				
DMV-DLE 5125/11 eco		248500	1711/2PL	X									X	X							X
DMV-DLE 5100/12		248500	1711/2PL	X									X	X							X
DMV 5125/12		248506	1811/2P	X										X							X
DMV-D 5125/12		248506	1811/2P	X										X							X
DMV 5125/12		247872	1811/2P	X										X							X
DMV-D 5125/12		247872	1811/2P	X										X							X

Leiterplatten_PCBs DMV... (1_Stück_Piece)

Artikelbezeichnung Article designation	Bestell-Nr. Order no.	Kommentar Comment	Gültig bis Valid until	Gültig ab Valid from	Magnet Typ Coil type	Plug DIN 43650 A	Terminal plugs	Rp 3/8	Rp 1/2	Rp 3/4	Rp 1	Rp 1 1/4	Rp 1 1/2	Rp 2	Rp 2 1/2	DN 40	DN 50	DN 65	DN 80	DN 100	DN 125	12 V DC	110 V AC	120 V AC (US)	200 V AC	230 V AC	24-28 V DC
220 - 240 VAC	266141				1011	X	X																			X	
220 - 240 VAC	266144				1111	X				X																	X
220 - 240 VAC	266144		1997-08		1311	X										X											X
220 - 240 VAC	266144		1997-08		1311	X											X										X
220 - 240 VAC	266147			1997-09	1212	X									X												X
220 - 240 VAC	266147			1997-09	1212	X											X										X
220 - 240 VAC	266147				1211, 1212, 1411, 1511	X						X															X
220 - 240 VAC	266147				1211, 1212, 1411, 1511	X								X													X
220 - 240 VAC	266147				1211, 1212, 1411, 1511	X									X												X
220 - 240 VAC	266147				1211, 1212, 1411, 1511	X												X									X
220 - 240 VAC	266148				1611, 1711	X															X						X
220 - 240 VAC	266148				1611, 1711	X															X						X
110 - 120 VAC	266142				1011	X	X																X	X			
110 - 120 VAC	266145				1111	X				X													X	X			
110 - 120 VAC	266145		1997-08		1311	X										X							X	X			
110 - 120 VAC	266145		1997-08		1311	X											X						X	X			
110 - 120 VAC	266149			1997-09	1212	X										X							X	X			
110 - 120 VAC	266149			1997-09	1212	X											X						X	X			
110 - 120 VAC	266149				1211, 1212, 1411, 1511	X						X											X	X			
110 - 120 VAC	266149				1211, 1212, 1411, 1511	X								X									X	X			
110 - 120 VAC	266149				1211, 1212, 1411, 1511	X									X								X	X			

Leiterplatten_PCBs DMV... (1_Stück_Piece)

Artikelbezeichnung Article designation	Bestell-Nr. Order no.	Kommentar Comment	Gültig bis Valid until	Gültig ab Valid from	Magnet Typ Coil type	Plug DIN 43650 A	Terminal plugs	Rp 3/8	Rp 1/2	Rp 3/4	Rp 1	Rp 1 1/4	Rp 1 1/2	Rp 2	Rp 2 1/2	DN 40	DN 50	DN 65	DN 80	DN 100	DN 125	12 V DC	110 V AC	120 V AC (US)	200 V AC	230 V AC	24-28 V DC
110 - 120 VAC	266149				1211, 1212, 1411, 1511	X												X				X	X				
110 - 120 VAC	266149				1211, 1212, 1411, 1511	X													X			X	X				
110 - 120 VAC	266150				1611, 1711	X														X		X	X				
110 - 120 VAC	266150				1611, 1711	X															X	X	X				
...VDC	266143				1011	X	X																			X	
...VDC	266146				1111	X			X																	X	
...VDC	266146		1997-08		1311	X									X											X	
...VDC	266146		1997-08		1311	X										X										X	
...VDC	266151			1997-09	1212	X									X											X	
...VDC	266151			1997-09	1212	X										X										X	
...VDC	266151				1211, 1212, 1411, 1511	X					X															X	
...VDC	266151				1211, 1212, 1411, 1511	X							X													X	
...VDC	266151				1211, 1212, 1411, 1511	X												X								X	
...VDC	266151				1211, 1212, 1411, 1511	X													X							X	
...VDC	266151				1611, 1711	X														X						X	
...VDC	266151				1611, 1711	X															X					X	
							X																				
220 - 240 VAC		*			1161	X																				X	
220 - 240 VAC		*	1997-08		1361	X																				X	
220 - 240 VAC		**		1997-09	1261 > 1211	X			X																	X	
220 - 240 VAC		**		1997-09	1262 > 1212	X			X																	X	

Leiterplatten_PCBs DMV... (1_Stück_Piece)

Artikelbezeichnung Article designation	Bestell-Nr. Order no.	Kommentar Comment	Gültig bis Valid until	Gültig ab Valid from	Magnet Typ Coil type	Plug DIN 43650 A	Terminal plugs	Rp 3/6	Rp 1/2	Rp 3/4	Rp 1	Rp 1 1/4	Rp 1 1/2	Rp 2	Rp 2 1/2	DN 40	DN 50	DN 65	DN 80	DN 100	DN 125	12 V DC	110 V AC	120 V AC (US)	200 V AC	230 V AC	24-28 V DC
220 - 240 VAC	266152				1261, 1262, 1461, 1561		X					X														X	
220 - 240 VAC	266152				1261, 1262, 1461, 1561		X							X													X
220 - 240 VAC	266152				1261, 1262, 1461, 1561		X								X												X
220 - 240 VAC	266152				1261, 1262, 1461, 1561		X											X									X
220 - 240 VAC	266152				1261, 1262, 1461, 1561		X												X								X
220 - 240 VAC	266153				1661, 1761		X													X							X
220 - 240 VAC	266153				1661, 1761		X														X						X
110 - 120 VAC		*			1161		X																X	X			
110 - 120 VAC		*	1997-08		1361		X																X	X			
110 - 120 VAC		**			1262 > 1212																		X	X			
110 - 120 VAC	266154				1261, 1262, 1461, 1561		X					X											X	X			
110 - 120 VAC	266154				1261, 1262, 1461, 1561		X							X									X	X			
110 - 120 VAC	266154				1261, 1262, 1461, 1561		X											X					X	X			
110 - 120 VAC	266154				1261, 1262, 1461, 1561		X												X				X	X			
110 - 120 VAC	266155				1661, 1761		X													X			X	X			
110 - 120 VAC	266155				1661, 1761		X														X		X	X			
...VDC		*			1161		X																				X
...VDC		*	1997-08		1361		X																				X
...VDC		**		1997-09	1262 > 1212		X		X																		X
...VDC	266156				1261, 1262, 1461, 1561		X					X															X
...VDC	266156				1261, 1262, 1461, 1561		X							X													X

Leiterplatten_PCBs DMV... (1_Stück_Piece)

Artikelbezeichnung Article designation	Bestell-Nr. Order no.	Kommentar Comment	Gültig bis Valid until	Gültig ab Valid from	Magnet Typ Coil type	Plug DIN 43650 A	Terminal plugs	Rp 3/8	Rp 1/2	Rp 3/4	Rp 1	Rp 1 1/4	Rp 1 1/2	Rp 2	Rp 2 1/2	DN 40	DN 50	DN 65	DN 80	DN 100	DN 125	12 V DC	110 V AC	120 V AC (US)	200 V AC	230 V AC	24-28 V DC
...VDC	266156				1261, 1262, 1461, 1561	X									X												X
...VDC	266156				1261, 1262, 1461, 1561	X													X								X
...VDC	266156				1261, 1262, 1461, 1561	X													X								X
...VDC	266156				1661, 1761	X														X							X
...VDC	266156				1661, 1761	X															X						X

* not available any longer, new valve

** Replacement through solenoid with plug connection

Leiterplatten-PCBs DMV-.../11 eco, DMV-.../12

Artikelbezeichnung Article designation	Bestell-Nr. Order no.	Kommentar Comment	Magnet Typ Coil type	Rp 3/8	Rp 1/2	Rp 3/4	Rp 1	Rp 1 1/4	Rp 1 1/2	Rp 2	Rp 2 1/2	DN 40	DN 50	DN 65	DN 80	DN 100	DN 125	DN 150	DN 200	12 V DC	24 V AC	100 V AC	110 V AC	120 V AC (US)	200 V AC	230 V AC	24-28 V DC
				DMV 525/11 eco DMV-D 525/11 eco		only complete solenoid	1411/2P							X													
DMV 5065/11 eco DMV-D 5065/11 eco		only complete solenoid	1411/2P												X												
DMV 5080/11 eco DMV-D 5080/11 eco	248492		1511/2P												X											X	
DMV 5080/11 eco DMV-D 5080/11 eco	257137		1511/2P												X							X					
DMV 5080/11 eco DMV-D 5080/11 eco	257604		1511/2P												X												X
DMV 5100/11 eco DMV-D 5100/11 eco	248492		1611/2P													X										X	
DMV 5100/11 eco DMV-D 5100/11 eco	257137		1611/2P													X						X					
DMV 5100/11 eco DMV-D 5100/11 eco	257604		1611/2P													X											X
DMV 5125/11 eco DMV-D 5125/11 eco	248492		1711/2P														X									X	
DMV 5125/11 eco DMV-D 5125/11 eco	257137		1711/2P														X						X				
DMV 5125/11 eco DMV-D 5125/11 eco	257604		1711/2P														X										X
DMV-DLE 5065/11 eco		only complete solenoid	1411/2PL													X											
DMV-DLE 5080/11 eco	248493		1511/2PL													X											X
DMV-DLE 5080/11 eco	262827		1511/2PL													X							X				
DMV-DLE 5100/11 eco	248493		1611/2PL													X											X
DMV-DLE 5100/11 eco	262827		1511/2PL													X							X				
DMV-DLE 5125/11 eco	248493		1711/2PL														X										X

Leiterplatten-PCBs DMV-.../11 eco, DMV-.../12

Artikelbezeichnung Article designation	Bestell-Nr. Order no.	Kommentar Comment	Magnet Typ Coil type	Rp 3/8	Rp 1/2	Rp 3/4	Rp 1	Rp 1 1/4	Rp 1 1/2	Rp 2	Rp 2 1/2	DN 40	DN 50	DN 65	DN 80	DN 100	DN 125	DN 150	DN 200	12 V DC	24 V AC	100 V AC	110 V AC	120 V AC (US)	200 V AC	230 V AC	24-28 V DC
				DMV-DLE 5125/11 eco	262827		1711/2PL														X					X	
DMV 525/12 DMV-D 525/12		only complete solenoid	1411/2P							X																	
DMV 5065/12 DMV-D 5065/12	248492		1511/2P												X												X
DMV 5065/12 DMV-D 5065/12	257137		1511/2P												X							X					
DMV 5065/12 DMV-D 5065/12	257604		1511/2P												X												X
DMV 5080/12 DMV-D 5080/12	248492		1611/2P												X											X	
DMV 5080/12 DMV-D 5080/12	257137		1611/2P												X							X					
DMV 5080/12 DMV-D 5080/12	257604		1611/2P												X												X
DMV 5100/12 DMV-D 5100/12	248492		1711/2P													X											X
DMV 5100/12 DMV-D 5100/12	257137		1711/2P													X						X					
DMV 5100/12 DMV-D 5100/12	257604		1711/2P													X											X
DMV 5125/12 DMV-D 5125/12	248492		1811/2P														X									X	
DMV 5125/12 DMV-D 5125/12	257137		1811/2P														X					X					
DMV 5125/12 DMV-D 5125/12	257604		1811/2P														X										X
DMV-DLE 5065/12	248493		1511/2PL												X												X
DMV-DLE 5080/12	248493		1611/2PL												X												X
DMV-DLE 5100/12	248493		1711/2PL													X											X

O-Ringe
O rings

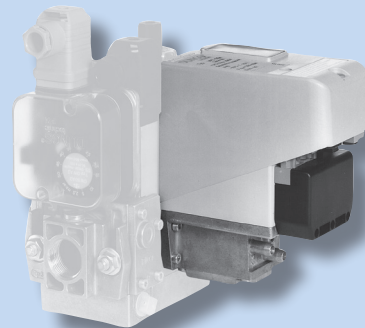


Produktgruppe Product Group	Ersatzteile • Replacement parts Bezeichnung • Designation
O-Ringe O-rings	Ersatz O-Ringe Replacement O-rings DMV-... + MB-... B0x

Replacement O-rings DMV-... + MB-... B0x

Artikelbezeichnung Article designation	Bestell-Nr. Order no.	Prod. Familie Prod. Family	Kommentar Comment	Länge [mm] Length [mm]	Breite [mm] Width [mm]	Rp 3/8	Rp 1/2	Rp 3/4	Rp 1	Rp 1 1/4	Rp 1 1/2	Rp 2	Rp 2 1/2
* 6-eckige Dichtung, hex. Seal													
for DMV 503	230442	DMV		45,00	3,00	X							
for DMV 507	230443	DMV		57,00	3,00			X					
for DMV 512/520	230444	DMV		75,00	3,50					X		X	
for DMV 525	231574	DMV											X
for MB 403	242117	MB-B	*	Inlet: 42,00 Outlet: 36,00	Inlet: 2,50 Outlet: 3,00	X							
for MB 405 / 407	242118	MB-B		36,00	3,00		X	X					
for MB 410 / 412	242119	MB-B		50,00	3,00				X	X			
for MB 415/420	230444	MB-B		75,00	3,50						X	X	
for MB 425	231574	MB-B	*										X
MBC-300	230443	MBC		57,00	3,00				X				
MBC-700 MBC-1200	230444	MBC		75,00	3,50						X		

Ventilprüfsysteme
Valve proving systems



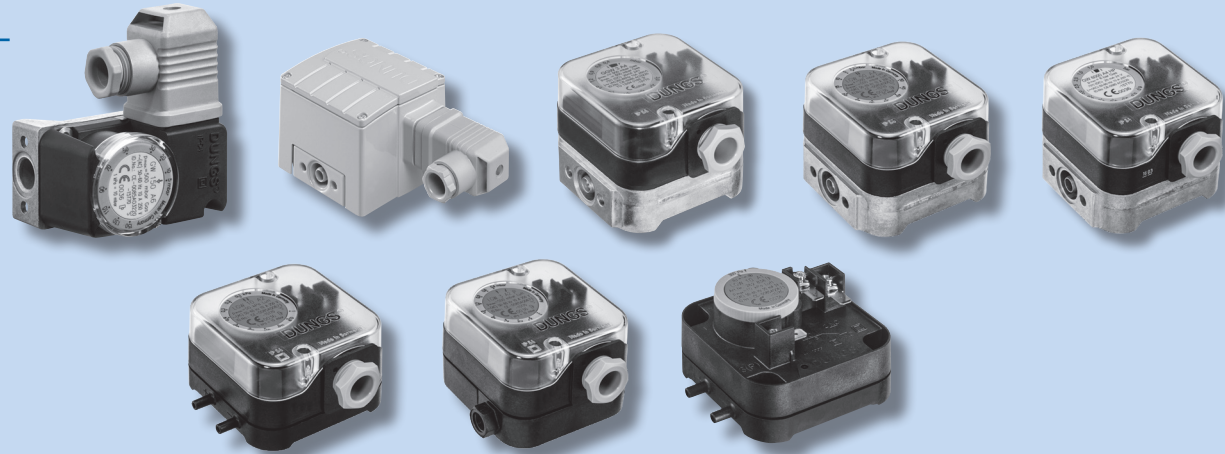
Produktgruppe Product Group	Ersatzteile • Replacement parts Bezeichnung • Designation
Ventilprüfsysteme Valve proving systems	Sicherung/Filter Fuse/Filter

Sicherung_Filter, Fuse_Filter

Artikelbezeichnung Article designation	Bestell-Nr. Order no.	12 V DC	24 V AC	100 V AC	110 V AC	120 V AC (US)	200 V AC	230 V AC	24-28 V DC	VPS 504 S01	VPS 504 S02	VPS 504 S03 VPS 508 S03	VPS 504 S04 VPS 508 S04	VPS 504 S05 VPS 508 S05
Equipment fuse-link T 6,3 A 250 V (IEC127-2/III) D 5 x 20 (5 Stück-pieces)	231780							X		X	X	X	X	X
Filter replacement set VPS 50x (screw M4 x 16) *	221503									X	X	X	X	X
Filter replacement set VPS 50x (screw M4 x 20) *	292210									X	X	X	X	X
Plug 7-pol (1 piece)	231807										X			

* Please note Declaration of conformity / Instructions

Druckwächter
Pressure switches



Produktgruppe Product Group	Ersatzteile • Replacement parts Bezeichnung • Designation
Druckwächter Pressure switches	Druckwächter Ersatzteile Pressure switch spare parts

Druckwächter / Pressure switches

Artikelbezeichnung Article designation	Bestell-Nr. Order no.	LGW A1	LGW A2	LGW A2/7	LGW A2P	LGW A4	LGW A4/2	GW A5	GW A6	GGW A4	GW A4 HP	GW A4	GW A4/2 HP	NB/ÜB A4	NB/ÜB A2
Set Befestigungswinkel Mounting bracket set	230288	x	x	x		x				x	x			x	x
Befestigungswinkel (10 Stk.) Mounting bracket (10 pcs.)	230289	x	x	x		x				x					
Befestigungsplatte Mounting plate	230301	x	x	x											
Befestigungsplatte (50 Stk.) Mounting plate (50 pcs.)	230302	x	x	x											
Adapter-Set für PBR Adapeter set for PBR	273777							x							
Anbauflansche mit Zentrierbolzen (10 Stk.) Mounting flanges with centring bolts (10 pcs.)	230291	x	x	x											
Montage-Set Mounting set	223280							x							x
Montage-Set SAV Mounting set SAV	242771								x						
Montage-Set Doppeldruckwächter Double pressure switch mounting set	213910					x			x	x				x	
Adapter-Set für Montage an SV, DMV und MBC Pressure switch adapter set G 1/4" for SV, DMV, MBC	222982							x							
Adapter-Set für Gewindeflansch G1/8" für Montage an Pressure switch adapter set G 1/4" for MB 405-412	221630							x							
Klima-Set Klima-Set	192120	x	x	x											
Klima-Set Klima-Set	224277					x									
Klima-Set mit Befestigungsplatte Klima-Set with mounting plate	258247		x	x											
Anschlusschlauch 2 m (10 Stk.) Connection hose 2 m (10 pcs.)	230303		x	x											

Druckwächter / Pressure switches

Artikelbezeichnung Article designation	Bestell-Nr. Order no.	LGW A1	LGW A2	LGW A2/7	LGW A2P	LGW A4	LGW A4/2	GW A5	GW A6	GGW A4	GW A4 HP	GW A4	GW A4/2 HP	NB/ÜB A4	NB/ÜB A2
Blechschrauben 3,9 x 9,5 mm für Klima-Set (50 Stk.) Sheet metal screws 3.9 x 9.5 mm for klima-set (50 pcs.)	230304		x	x											
Bohrschablonen (50 Stk.) Drilling templates (50 pcs.)	230305	x	x	x											
Schlauchanschlüsse (50 Stk.) Hose connector (50 pcs.)	230306	x	x	x		x									
Verlängerungsrohre (50 Stk.) Hose connector (50 pcs.)	230307	x	x	x		x									
Winkel-Einschraubstutzen WES NW 4-R 1/8" Angled screw-in nozzle WES NW 4-R 1/8"	230278				x	x									
Winkel-Einschraubstutzen WES NW 4-R 1/4" Angled screw-in nozzle WES NW 4-R 1/4"	230279				x	x									
Adapter Ø 4/6 mm (2 Stk.) Adapter Ø 4/6 mm (2 pcs.)	266037	x	x	x											
Verschlusskappen Ø 4,6 mm (20 Stk.) Sealing caps Ø 4.6 mm (20 pcs.)	237834				x										
Dämpfungsdüsen Ø 0,4 mm (2 Stk.) Damping nozzles Ø 0.4 mm (2 pcs.)	266040	x	x												
Dämpfungsdüsen Ø 0,8 mm (2 Stk.) Damping nozzles Ø 0.8 mm (2 pcs.)	266041	x	x												
Atmungsstopfen G 1/4" (5 Stk.) Breathing plugs G 1/4" (5 pcs.)	230399					x				x					
Set Messstutzen mit Dichtring G 1/4" Pressure test point set with sealing ring G 1/4"	266042					x			x	x				x	
Set Messstutzen mit Dichtring G 1/4" (5 Stk.) Pressure test point set with sealing ring G 1/4" (5 pcs.)	230398					x			x	x				x	
Set Messstutzen mit Dichtring G 1/4" (50 Stk.) Pressure test point set with sealing ring G 1/4" (50 pcs.)	253214					x			x	x				x	
Set Messstutzen mit Dichtring G 1/8" Pressure test point set with sealing ring G 1/8"	219008					x				x					

Druckwächter / Pressure switches

Artikelbezeichnung Article designation	Bestell-Nr. Order no.	LGW A1	LGW A2	LGW A2/7	LGW A2P	LGW A4	LGW A4/2	GW A5	GW A6	GGW A4	GW A4 HP	GW A4	GW A4/2 HP	NB/ÜB A4	NB/ÜB A2
Set Messstutzen mit Dichtring G 1/8" (5 Stk.) Pressure test point set with sealing ring G 1/8" (5 pcs.)	230397					x				x					
Set Messstutzen mit Dichtring G 1/8" (50 Stk.) Pressure test point set with sealing ring G 1/8" (50 pcs.)	251381					x				x					
Verschlussschraube für Messstutzen Locking screw for pressure test point	266036					x		x	x	x					
Set Verschlussschraube mit Dichtring G1/4" Locking screw set with sealing ring G 1/4"	266044					x			x	x				x	
Set Verschlussschraube mit Dichtring G1/4" (5 Stk.) Locking screw set with sealing ring G 1/4" (5 pcs.)	230396					x			x	x				x	
Set Verschlussschraube mit Dichtring G1/8" Locking screw set with sealing ring G 1/8"	270802					x				x					
Set Dämpfungsdüse G 1/8" (Ø 0,2 mm) Damping nozzle set G 1/8" (Ø 0.2 mm)	294269					x									
Set Ersatzhaube IP 54 Spare cover set IP 54	266035							x	x						
Set Ersatzhaube IP 54 (50 Stk.) Spare cover set IP 54	240124							x	x						
Set Ersatzhaube IP 54 Spare cover set IP 54	230275					x				x	x				
Set Ersatzhaube IP 54 Spare cover set IP 54	230276		x	x	x										
Set Ersatzhaube IP 65 Spare cover set IP 65	257841		x SGN	x	x	x SGV									
Set Ersatzhaube IP 65 Spare cover set IP 65	237602					x				x					
Zylinderschrauben 3 x 14 mm für Haube/Berührschutz (2 Stk.) Cylinder screws 3 x 14 mm for cover / touch protection (2 pcs.)	266045	x	x	x	x	x		x	x	x	x			x	x
Zylinderschrauben 3 x 14 mm für Haube/Berührschutz (100 Stk.) Cylinder screws 3 x 14 mm for cover / touch protection(100 pcs.)	237675	x	x	x	x	x		x	x	x	x			x	x

Druckwächter / Pressure switches

Artikelbezeichnung Article designation	Bestell-Nr. Order no.	LGW A1	LGW A2	LGW A2/7	LGW A2P	LGW A4	LGW A4/2	GW A5	GW A6	GGW A4	GW A4 HP	GW A4	GW A4/2 HP	NB/ÜB A4	NB/ÜB A2
Set Berührungsschutz ohne Zugentlastung IP 20 Touch protection set without strain relief IP 20	262045	x													
Set Berührungsschutz ohne Zugentlastung IP 20 (50 Stk.) Touch protection set without strain relief IP 20 (50 pcs.)	262046	x													
Set Berührungsschutz ohne Zugentlastung IP 42 Touch protection set without strain relief IP 42	262047	x													
Set Leitungsdose 2-polig mit PE Line socket set 2-pin with PE	210317						x				x		x		
Leitungsdose 3-polig mit PE Line socket 3-pin with PE	210318		x			x		x	x			x		x	x
Leitungsdose mit LED Grün/Rot (ohne CE) Line socket with LED green/red (no CE)	242245							x	x						
Set- Gerätestecker 3-polig mit PE Equipment plug set 3-pin with PE	219659					x				x	x	x			
Set- Gerätestecker 3-polig ohne PE Equipment plug set 3-pin without PE	231770		x SGV												
Set- Gerätestecker 3-polig mit PE Equipment plug set 3-pin with PE	227644													x	x
Montage-Set Glimmlampe 120 V Gelb Glow lamp mounting set 120 V Yellow	231772		x	x	x	x				x	x	x		x	x
Ersatz-Glimmlampe 120 V Gelb Spare glow lamp 120 V Yellow	244156		x	x	x	x				x	x	x		x	x
Montage-Set Glimmlampe 230 V Gelb Glow lamp mounting set 230 V Yellow	231773		x	x	x	x				x	x	x		x	x
Ersatz-Glimmlampe 230 V Gelb Spare glow lamp 230 V Yellow	266039		x	x	x	x				x	x	x		x	x
Montage-Set Glimmlampe 230 V Grün Glow lamp mounting set 230 V Green	248239		x	x	x	x				x	x	x		x	x
Montage-Set Anzeige-LED 24 V Gelb Indicator LED mounting set 24 V Yellow	231774		x	x	x	x				x	x	x		x	x

Druckwächter / Pressure switches

Artikelbezeichnung Article designation	Bestell-Nr. Order no.	LGW A1	LGW A2	LGW A2/7	LGW A2P	LGW A4	LGW A4/2	GW A5	GW A6	GGW A4	GW A4 HP	GW A4	GW A4/2 HP	NB/ÜB A4	NB/ÜB A2
Ersatz-LED Lampe 24 V Gelb Spare LED lamp 24 V Yellow	244157		x	x	x	x				x	x	x		x	x
Montage-Set Anzeige-LED 24 V Grün Indicator LED mounting set 24 V Green	248240		x	x	x	x				x	x	x		x	x
Ersatzkabelverschraubung für M20 Spare cable gland for M20	293517		x	x	x	x				x	x				



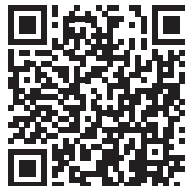
Kontaktieren Sie uns

Karl Dungs GmbH & Co. KG
Karl-Dungs-Platz 1
(ehemals Siemensstraße 6-10)
73660 Urbach, Deutschland

Telefon: +49 7181 804-0
Telefax: +49 7181 804-166
E-Mail: info@dungs.com

Link Kontakt

<https://www.dungs.com/de/service/kontakt>



Contact us

Karl Dungs GmbH & Co. KG
Karl-Dungs-Platz 1
(formerly Siemensstraße 6-10)
D-73660 Urbach, Germany

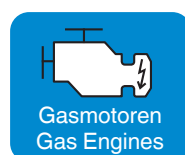
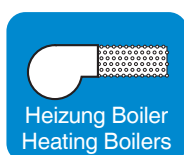
Phone: +49 7181 804-0
Fax: +49 7181 804-166
Email: info@dungs.com

Link Contact

<https://www.dungs.com/en/service/contact>



www.dungs.com



 Karl Dungs GmbH & Co. KG
Karl-Dungs-Platz 1
D-73660 Urbach, Germany
 Telefon +49 7181- 804-0
Telefax +49 7181-804-166
 info@dungs.com
www.dungs.com